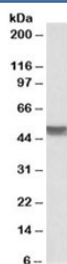


Cytokeratin 20 Antibody / KRT20 / CK20 (R34023)

Catalog No.	Formulation	Size
R34023-100UG	0.5 mg/ml in 1X TBS, pH7.3, with 0.5% BSA (US sourced) and 0.02% sodium azide	100 ug

[Bulk quote request](#)

Availability	1-3 business days
Species Reactivity	Human
Format	Antigen affinity purified
Clonality	Polyclonal (goat origin)
Isotype	Goat Ig
Purity	Antigen affinity
Gene ID	54474
Applications	Western Blot : 0.01-0.03ug/ml Enzyme ImmunoAssay : used as detect for recombinant protein ELISA (peptide) LOD : 1:128000
Limitations	This Cytokeratin 20 antibody is available for research use only.



Western blot testing of human colon lysate with Cytokeratin 20 antibody at 0.03ug/ml.
Predicted molecular weight: ~49kDa.

Description

Additional name(s) for this target protein: Keratin 20, CK20; KRT20

Application Notes

Optimal dilution of the Cytokeratin 20 antibody should be determined by the researcher.

Immunogen

Amino acids ETNAPRAGRDIS were used as the immunogen for this Cytokeratin 20 antibody.

Storage

Aliquot and store the Cytokeratin 20 antibody at -20oC.