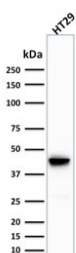


Cytokeratin 20 Antibody / CK20 [clone SPM191] (V8020)

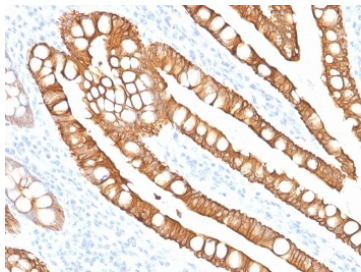
| Catalog No. | Formulation | Size |
|----------------|--|--------|
| V8020-100UG | 0.2 mg/ml in 1X PBS with 0.1 mg/ml BSA (US sourced) and 0.05% sodium azide | 100 ug |
| V8020-20UG | 0.2 mg/ml in 1X PBS with 0.1 mg/ml BSA (US sourced) and 0.05% sodium azide | 20 ug |
| V8020SAF-100UG | 1 mg/ml in 1X PBS; BSA free, sodium azide free | 100 ug |

[Bulk quote request](#)

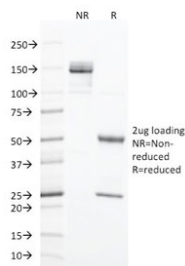
| | |
|---------------------------|---|
| Availability | 1-3 business days |
| Species Reactivity | Human |
| Format | Purified |
| Host | Mouse |
| Clonality | Monoclonal (mouse origin) |
| Isotype | Mouse IgG2b, kappa |
| Clone Name | SPM191 |
| Purity | Protein G affinity chromatography |
| UniProt | P35900 |
| Localization | Cytoplasmic |
| Applications | Western Blot : 1-2ug/ml Immunohistochemistry (FFPE) : 1-2ug/ml |
| Limitations | This Cytokeratin 20 antibody is available for research use only. |



Western blot testing of human HT29 cell lysate with Cytokeratin 20 antibody (clone SPM191). Predicted molecular weight ~46 kDa.



IHC staining of FFPE human colon carcinoma with Cytokeratin 20 antibody (clone SPM191). HIER: boil tissue sections in pH 9 10mM Tris with 1mM EDTA for 20 min and allow to cool before testing.



SDS-PAGE analysis of purified, BSA-free Cytokeratin 20 antibody (clone SPM191) as confirmation of integrity and purity.

Description

This MAb recognizes an intermediate filament protein of 46kDa, identified as cytokeratin 20 (KRT20). KRT is abundantly expressed in goblet cells and enterocytes of the gastrointestinal tract. It is a useful marker of pancreatic and colorectal cancer. KRT20 is expressed under normal, hyperplastic and neoplastic conditions. It has been detected in adenocarcinomas of the colon, stomach and biliary tract. Breast carcinomas are generally non-reactive.

Application Notes

Optimal dilution of the Cytokeratin 20 antibody should be determined by the researcher.

Immunogen

A recombinant human partial protein (amino acids 196-323) was used as the immunogen for this Cytokeratin 20 antibody.

Storage

Store the Cytokeratin 20 antibody at 2-8°C (with azide) or aliquot and store at -20°C or colder (without azide).