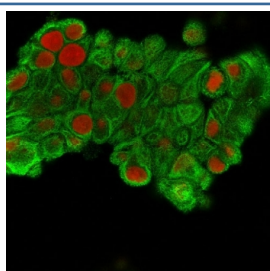


## Cytokeratin 19 Antibody [clone SPM561] (V9127)

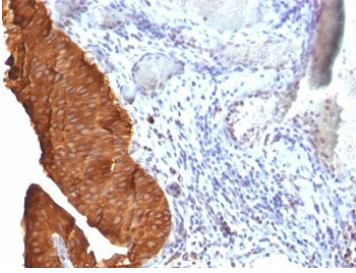
Catalog No.	Formulation	Size
V9127-100UG	0.2 mg/ml in 1X PBS with 0.1 mg/ml BSA (US sourced) and 0.05% sodium azide	100 ug
V9127-20UG	0.2 mg/ml in 1X PBS with 0.1 mg/ml BSA (US sourced) and 0.05% sodium azide	20 ug
V9127SAF-100UG	1 mg/ml in 1X PBS; BSA free, sodium azide free	100 ug
V9127IHC-7ML	Prediluted in 1X PBS with 0.1 mg/ml BSA (US sourced) and 0.05% sodium azide; *For IHC use only*	7 ml

[Bulk quote request](#)

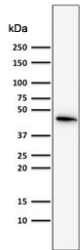
<b>Availability</b>	1-3 business days
<b>Species Reactivity</b>	Human
<b>Format</b>	Purified
<b>Clonality</b>	Monoclonal (mouse origin)
<b>Isotype</b>	Mouse IgG1, kappa
<b>Clone Name</b>	SPM561
<b>Purity</b>	Protein G affinity chromatography
<b>UniProt</b>	P08727
<b>Localization</b>	Cytoplasmic
<b>Applications</b>	Western Blot : 1-2ug/ml Flow Cytometry : 1-2ug/10 <sup>6</sup> cells Immunofluorescence : 1-2ug/ml Immunohistochemistry (FFPE) : 1-2ug/ml for 30 min at RT
<b>Limitations</b>	This Cytokeratin 19 antibody is available for research use only.



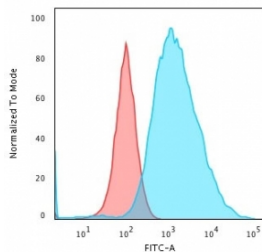
Immunofluorescent staining of MeOH fixed human MCF7 cells with Cytokeratin 19 antibody (clone SPM561, green) and Reddot nuclear stain (red).



IHC: Formalin-fixed, paraffin-embedded human bladder carcinoma stained with Cytokeratin 19 antibody (clone SPM561).



Western blot testing of human MCF7 cells with Cytokeratin 19 antibody (clone SPM561). Predicted molecular weight ~43 kDa.



Flow cytometry testing of MeOH fixed human MCF7 cells with Cytokeratin 19 antibody (clone SPM561); Red=isotype control, Blue= Cytokeratin 19 antibody.

## Description

Cytokeratin-19 is expressed in sweat gland, mammary gland ductal and secretory cells, bile ducts, gastrointestinal tract, bladder urothelium, oral epithelia, esophagus, and ectocervical epithelium. Anti-CK19 reacts with a wide variety of epithelial malignancies including adenocarcinomas of the colon, stomach, pancreas, biliary tract, liver, and breast.

## Application Notes

The optimal dilution of the Cytokeratin 19 antibody for each application should be determined by the researcher.

1. Staining of formalin-fixed tissues requires boiling tissue sections in pH 9 10mM Tris with 1mM EDTA for 10-20 min followed by cooling at RT for 20 minutes.
2. The prediluted format is supplied in a dropper bottle and is optimized for use in IHC. After epitope retrieval step (if required), drip mAb solution onto the tissue section and incubate at RT for 30 min.

## Immunogen

Human mammary epithelial organoids were used as the immunogen for this Cytokeratin 19 antibody.

## Storage

Store the Cytokeratin 19 antibody at 2-8°C (with azide) or aliquot and store at -20°C or colder (without azide).

