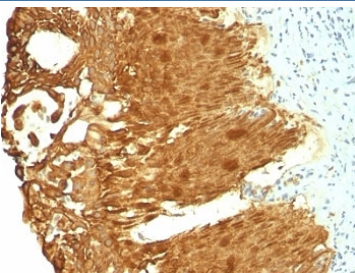


Cytokeratin 19 Antibody Cocktail [clone KRT19/799 + KRT19/800] (V2681)

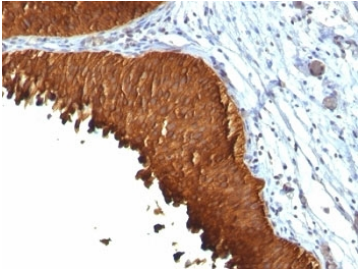
Catalog No.	Formulation	Size
V2681-100UG	0.2 mg/ml in 1X PBS with 0.1 mg/ml BSA (US sourced) and 0.05% sodium azide	100 ug
V2681-20UG	0.2 mg/ml in 1X PBS with 0.1 mg/ml BSA (US sourced) and 0.05% sodium azide	20 ug
V2681SAF-100UG	1 mg/ml in 1X PBS; BSA free, sodium azide free	100 ug
V2681IHC-7ML	Prediluted in 1X PBS with 0.1 mg/ml BSA (US sourced) and 0.05% sodium azide; *For IHC use only*	7 ml

Bulk quote request

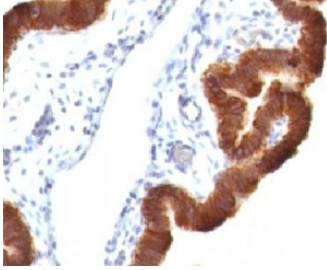
Availability	1-3 business days
Species Reactivity	Human
Format	Purified
Host	Mouse
Clonality	Monoclonal (mouse origin)
Isotype	Mouse IgG1, kappa and IgG2a, lambda
Clone Name	KRT19/799 + KRT19/800
Purity	Protein G affinity chromatography
UniProt	P08727
Localization	Cytoplasmic
Applications	Immunohistochemistry (FFPE) : 0.1-0.2ug/ml for 30 min at RT
Limitations	This Cytokeratin 19 antibody cocktail is available for research use only.



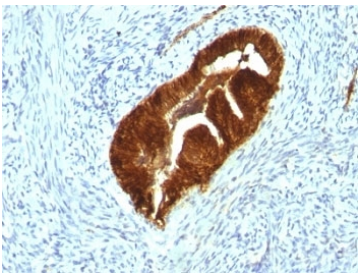
IHC: Formalin-fixed, paraffin-embedded human cervical carcinoma stained with Cytokeratin 19 antibody (KRT19/799 + KRT19/800).



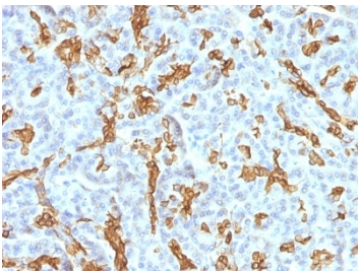
IHC: Formalin-fixed, paraffin-embedded human bladder carcinoma stained with Cytokeratin 19 antibody (KRT19/799 + KRT19/800).



IHC: Formalin-fixed, paraffin-embedded human ovarian carcinoma stained with Cytokeratin 19 antibody (KRT19/799 + KRT19/800).



IHC: Formalin-fixed, paraffin-embedded human endometrial carcinoma stained with Cytokeratin 19 antibody (KRT19/799 + KRT19/800).



IHC: Formalin-fixed, paraffin-embedded human pancreas stained with Cytokeratin 19 antibody (KRT19/799 + KRT19/800).

Description

Recognizes a protein of 40kDa, identified as cytokeratin-19 (CK19), which is expressed in sweat gland, mammary gland ductal and secretory cells, bile ducts, gastrointestinal tract, bladder urothelium, oral epithelia, esophagus, and ectocervical epithelium. Anti-CK19 reacts with a wide variety of epithelial malignancies including adenocarcinomas of the colon, stomach, pancreas, biliary tract, liver, and breast. Perhaps the most useful application is the identification of thyroid carcinoma of the papillary type, although 50%-60% of follicular carcinomas are also labeled. Anti-CK19 is a useful marker for detection of tumor cells in lymph nodes, peripheral blood, bone marrow and breast cancer.

Application Notes

Optimal dilution of the Cytokeratin 19 antibody cocktail should be determined by the researcher.

1. Staining of formalin-fixed tissues requires boiling tissue sections in pH 9 10mM Tris with 1mM EDTA for 10-20 min followed by cooling at RT for 20 min
2. The prediluted format is supplied in a dropper bottle and is optimized for use in IHC. After epitope retrieval step (if required), drip mAb solution onto the tissue section and incubate at RT for 30 min.

Immunogen

Recombinant full-length human KRT19 protein was used as the immunogen for the Cytokeratin 19 antibody cocktail.

Storage

Store the Cytokeratin 19 antibody cocktail at 2-8°C (with azide) or aliquot and store at -20°C or colder (without azide).