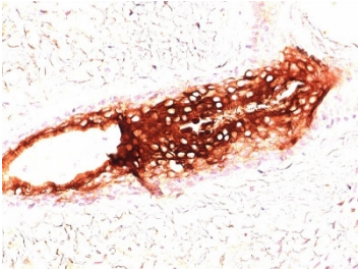


Cytokeratin 17 Antibody for FACS / Keratin 17 Flow Cytometry Antibody [clone SPM560] (V9059)

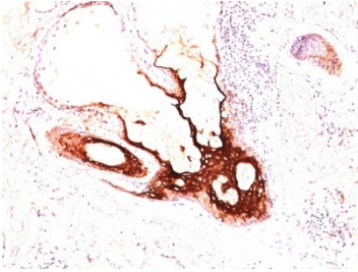
Catalog No.	Formulation	Size
V9059-100UG	0.2 mg/ml in 1X PBS with 0.1 mg/ml BSA (US sourced) and 0.05% sodium azide	100 ug
V9059-20UG	0.2 mg/ml in 1X PBS with 0.1 mg/ml BSA (US sourced) and 0.05% sodium azide	20 ug
V9059SAF-100UG	1 mg/ml in 1X PBS; BSA free, sodium azide free	100 ug
V9059IHC-7ML	Prediluted in 1X PBS with 0.1 mg/ml BSA (US sourced) and 0.05% sodium azide; *For IHC use only*	7 ml

Bulk quote request

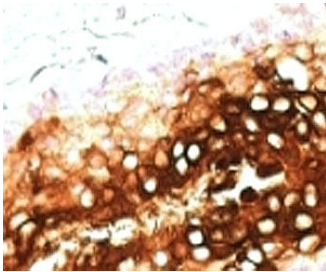
Availability	1-3 business days
Species Reactivity	Human
Format	Purified
Host	Mouse
Clonality	Monoclonal (mouse origin)
Isotype	Mouse IgG2b, kappa
Clone Name	SPM560
Purity	Protein G affinity chromatography
UniProt	Q04695
Localization	Cytoplasmic
Applications	Western Blot : 1-2ug/ml Flow Cytometry : 1-2ug/10 ⁶ cells Immunohistochemistry (FFPE) : 1-2ug/ml for 30 min at RT
Limitations	This Cytokeratin 17 antibody is available for research use only.



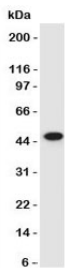
Cytokeratin 17 Antibody for FACS (clone SPM560) immunohistochemistry analysis of human skin tissue. Immunohistochemistry of FFPE human skin demonstrates strong HRP-DAB brown cytoplasmic staining in epithelial structures using Cytokeratin 17 Antibody for FACS (clone SPM560). The staining highlights epithelial cells consistent with the known expression of Cytokeratin 17 (CK17 / KRT17), an epithelial intermediate filament protein enriched in basal epithelial compartments and epithelial appendages of skin. Adjacent stromal tissue shows minimal staining, supporting epithelial cell-associated CK17 expression.



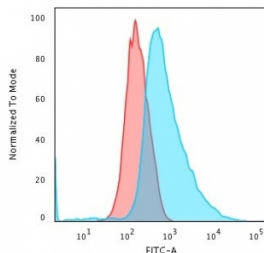
IHC: Formalin-fixed, paraffin-embedded human skin stained with Cytokeratin 17 antibody clone SPM560.



IHC: Formalin-fixed, paraffin-embedded human skin stained with CK17/Cytokeratin 17 antibody clone SPM560.



Western blot of HeLa lysate using Cytokeratin 17 antibody clone SPM560.



Cytokeratin 17 Antibody for FACS (clone SPM560) flow cytometry analysis of human HeLa cells. Flow cytometry of PFA-fixed human HeLa cells demonstrates a clear rightward fluorescence shift using Cytokeratin 17 Antibody for FACS (clone SPM560), indicating detection of intracellular Cytokeratin 17 (CK17 / KRT17). Red histogram: isotype control. Blue histogram: Cytokeratin 17 antibody staining. The shift in fluorescence intensity confirms specific detection of the epithelial intermediate filament protein Cytokeratin 17 in permeabilized HeLa cells, consistent with the known expression of KRT17 in epithelial-derived cell lines.

Description

Cytokeratin 17 (KRT17), also known as Keratin 17 or CK17, is a type I intermediate filament protein encoded by the KRT17 gene and expressed in epithelial tissues. Cytokeratin 17 contributes to the structural cytoskeleton of epithelial cells, forming part of the keratin intermediate filament network that supports cellular integrity and tissue architecture. Cytokeratin 17 Antibody for FACS (clone SPM560) recognizes the KRT17 protein and supports research applications focused on flow cytometry analysis of epithelial cell populations.

Flow cytometry provides a powerful approach for analyzing protein expression in large populations of cells at single-cell

resolution. Because Cytokeratin 17 is an intracellular cytoskeletal protein, detection by flow cytometry typically involves fixation and permeabilization steps that allow antibodies to access intracellular targets. Using Cytokeratin 17 Antibody for FACS, researchers can evaluate CK17 expression in epithelial cells, tumor-derived cell lines, or dissociated tissue samples while simultaneously measuring additional cellular markers in multiparametric flow cytometry experiments.

Keratin intermediate filaments are assembled from type I and type II keratin proteins that polymerize into filamentous networks throughout the cytoplasm. These networks provide mechanical resilience and structural stability to epithelial cells. Cytokeratin 17 participates in this filament system by pairing with complementary keratin proteins to form intermediate filaments that reinforce epithelial cell architecture. Detection of KRT17 expression by flow cytometry can therefore help identify epithelial lineage cells within mixed cell populations or assess epithelial differentiation states at the single-cell level.

In cancer research, Cytokeratin 17 expression has been widely investigated as a marker associated with epithelial tumors. Flow cytometry analysis using Cytokeratin 17 Antibody for FACS allows researchers to quantify CK17-positive tumor cells, evaluate heterogeneity within tumor cell populations, and isolate epithelial-derived cells for downstream analysis. Flow cytometry detection of cytokeratin proteins is commonly used in studies examining circulating tumor cells, epithelial lineage markers, and epithelial cell enrichment from complex biological samples.

Because keratin expression patterns vary among epithelial cell types, cytokeratin profiling is frequently used to characterize epithelial differentiation and tissue origin. Flow cytometric detection of CK17 can complement other epithelial markers in multiparametric panels, enabling detailed characterization of epithelial and tumor cell populations.

Cytokeratin 17 Antibody for FACS (clone SPM560) is a mouse monoclonal antibody developed for research applications involving flow cytometry. Detection of Cytokeratin 17 using clone SPM560 supports studies examining epithelial cell populations, epithelial tumor biology, and intracellular keratin expression using flow cytometry-based analysis.

Application Notes

The optimal dilution of the Cytokeratin 17 Antibody for FACS for each application should be determined by the researcher.

1. Staining of formalin-fixed tissues requires boiling tissue sections in pH 9 10mM Tris with 1mM EDTA for 10-20 min followed by cooling at RT for 20 minutes.
2. The prediluted format is supplied in a dropper bottle and is optimized for use in IHC. After epitope retrieval step (if required), drip mAb solution onto the tissue section and incubate at RT for 30 min.

Immunogen

A cytoskeletal fraction of rat colon epithelium was used as the immunogen for this Cytokeratin 17 antibody.

Storage

Store the Cytokeratin 17 antibody at 2-8°C (with azide) or aliquot and store at -20°C or colder (without azide).

Alternate Names

CK17 antibody, Keratin 17 antibody, KRT17 antibody, Cytokeratin-17 antibody

