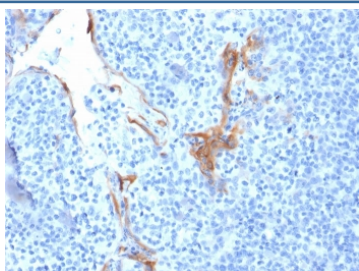


Cytokeratin 16 Antibody KRT16 [clone LL025] (V7921)

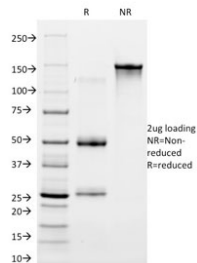
Catalog No.	Formulation	Size
V7921-100UG	0.2 mg/ml in 1X PBS with 0.1 mg/ml BSA (US sourced) and 0.05% sodium azide	100 ug
V7921-20UG	0.2 mg/ml in 1X PBS with 0.1 mg/ml BSA (US sourced) and 0.05% sodium azide	20 ug
V7921SAF-100UG	1 mg/ml in 1X PBS; BSA free, sodium azide free	100 ug

[Bulk quote request](#)

Availability	1-3 business days
Species Reactivity	Human
Format	Purified
Clonality	Monoclonal (mouse origin)
Isotype	Mouse IgG1, kappa
Clone Name	LL025
Purity	Protein G affinity chromatography
UniProt	P08779
Localization	Cytoplasmic
Applications	Immunohistochemistry (FFPE) : 1-2ug/ml
Limitations	This Cytokeratin 16 antibody is available for research use only.



IHC staining of FFPE human tonsil with Cytokeratin 16 antibody (clone LL025). HIER: boil tissue sections in pH 9 10mM Tris with 1mM EDTA for 20 min and allow to cool before testing.



SDS-PAGE analysis of purified, BSA-free Cytokeratin 16 antibody (clone LL025) as confirmation of integrity and purity.

Description

Cytokeratins are a family of intermediate filament proteins that assemble into filaments through forming heterodimers of one type I Cytokeratins (Cytokeratins 9 to 23) and one type II Cytokeratins (keratins 1 to 8). The cytokeratin proteins play a critical role in differentiation, as well as tissue specialization and function, to maintain the overall structural integrity of epithelial cells. Cytokeratins are also useful markers in identifying the origin of metastatic tumors. Cytokeratin 16 is expressed in benign stratified squamous epithelium and squamous cell carcinoma of the head and neck, as well as luminal cells of mammary gland and sweat ducts. It is absent in non-invasive breast carcinomas and normal breast tissue.

Application Notes

Optimal dilution of the Cytokeratin 16 antibody should be determined by the researcher.

Immunogen

An amino acid sequence from the C-terminal region of the protein was used as the immunogen for this Cytokeratin 16 antibody.

Storage

Store the Cytokeratin 16 antibody at 2-8oC (with azide) or aliquot and store at -20oC or colder (without azide).