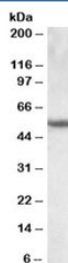


Cytokeratin 13 Antibody (R36291)

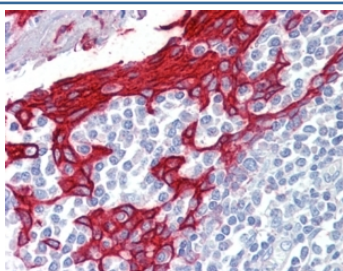
Catalog No.	Formulation	Size
R36291-100UG	0.5 mg/ml in 1X TBS, pH7.3, with 0.5% BSA (US sourced) and 0.02% sodium azide	100 ug

[Bulk quote request](#)

Availability	1-3 business days
Species Reactivity	Human
Format	Antigen affinity purified
Host	Goat
Clonality	Polyclonal (goat origin)
Isotype	Goat Ig
Purity	Antigen affinity
Gene ID	3860
Applications	Western Blot : 0.1-0.3ug/ml Immunohistochemistry (FFPE) : 2-4ug/ml ELISA (peptide) LOD : 1:128000
Limitations	This Cytokeratin 13 antibody is available for research use only.



Western blot testing of human lung lysate with Cytokeratin 13 antibody at 0.1ug/ml.
Predicted molecular weight: ~50kDa.



IHC staining of FFPE human tonsil with Cytokeratin 13 antibody at 2.5ug/ml. HIER: steamed with pH6 citrate buffer, AP-staining.

Description

Additional name(s) for this target protein: Keratin 13, KRT13, CK13, C13

Application Notes

Optimal dilution of the Cytokeratin 13 antibody should be determined by the researcher.

1. This Cytokeratin 13 antibody is specific for isoform a.

Immunogen

Amino acids TSNASGRRTSDVRRP were used as the immunogen for this Cytokeratin 13 antibody.

Storage

Aliquot and store the Cytokeratin 13 antibody at -20oC.