

## Cytokeratin 10/13 Antibody [clone SPM262] (V3054)

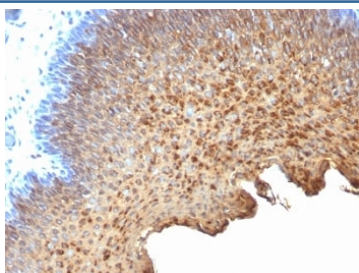
Catalog No.	Formulation	Size
V3054-100UG	0.2 mg/ml in 1X PBS with 0.1 mg/ml BSA (US sourced) and 0.05% sodium azide	100 ug
V3054-20UG	0.2 mg/ml in 1X PBS with 0.1 mg/ml BSA (US sourced) and 0.05% sodium azide	20 ug
V3054SAF-100UG	1 mg/ml in 1X PBS; BSA free, sodium azide free	100 ug
V3054IHC-7ML	Prediluted in 1X PBS with 0.1 mg/ml BSA (US sourced) and 0.05% sodium azide; *For IHC use only*	7 ml



Citations (3)

[Bulk quote request](#)

Availability	1-3 business days
Species Reactivity	Human
Format	Purified
Host	Mouse
Clonality	Monoclonal (mouse origin)
Isotype	Mouse IgG2a, kappa
Clone Name	SPM262
Purity	Protein G affinity chromatography
UniProt	P13645, P13646
Localization	Cytoplasmic
Applications	Immunohistochemistry (FFPE) : 1-2ug/ml for 30 min at RT
Limitations	This Cytokeratin 10/13 antibody is available for research use only.



IHC analysis of formalin-fixed, paraffin-embedded human tonsil stained with Cytokeratin 10/13 antibody (clone SPM262).

## Description

This antibody recognizes cytokeratin 10 (56.5kDa) and cytokeratin 13 (53kDa) in western blotting. It recognizes only cytokeratin 13 in formalin-fixed, paraffin-embedded tissue sections. It does not react with cytokeratin 10 positive, cytokeratin 13 negative epithelia such as epidermis. However, on frozen sections this mAb serves as differentiation-related marker of all stratified epithelia; it stains all suprabasal cells in both cornifying and non-cornifying stratified epithelia and more differentiated cells of squamous carcinomas.

## Application Notes

Optimal dilution of the Cytokeratin 10/13 antibody should be determined by the researcher.

1. Staining of formalin-fixed tissues requires boiling tissue sections in pH 9 10mM Tris with 1mM EDTA for 10-20 min followed by cooling at RT for 20 min.
2. The prediluted format is supplied in a dropper bottle and is optimized for use in IHC. After epitope retrieval step (if required), drip mAb solution onto the tissue section and incubate at RT for 30 min.

## Immunogen

A cytoskeletal preparation extracted from human ectocervical epithelium was used as the immunogen for the Cytokeratin 10/13 antibody.

## Storage

Store the Cytokeratin 10/13 antibody at 2-8oC (with azide) or aliquot and store at -20oC or colder (without azide).