

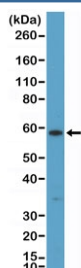
Cytokeratin 10 Antibody [clone RM386] (R20403)

Catalog No.	Formulation	Size
R20403-0.1ML	Antibody in PBS with 50% glycerol, 1% BSA and 0.09% sodium azide	100 ul

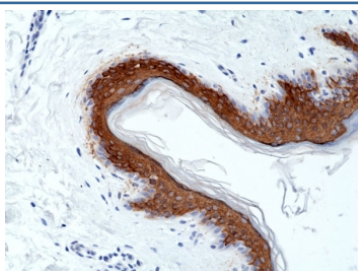
Recombinant **RABBIT MONOCLONAL**

[Bulk quote request](#)

Availability	1-3 business days
Species Reactivity	Human
Format	Purified
Clonality	Recombinant Rabbit Monoclonal
Isotype	Rabbit IgG
Clone Name	RM386
Purity	Protein A purified from animal origin-free supernatant
UniProt	P13645
Applications	Immunohistochemistry (FFPE) : 1:500-1:1000 Western Blot : 1:200-1:1000
Limitations	This recombinant Cytokeratin 10 antibody is available for research use only.



Western blot testing of human A431 cell lysate with recombinant Cytokeratin 10 antibody at 1:200 dilution. Predicted molecular weight ~59 kDa.



IHC staining of FFPE human skin tissue with recombinant Cytokeratin 10 antibody at 1:1000.

Description

This antibody reacts to human Cytokeratin 10 / CK10 / Keratin 10 / KRT10.

Application Notes

The stated application concentrations are suggested starting points. Titration of the recombinant Cytokeratin 10 antibody may be required due to differences in protocols and secondary/substrate sensitivity.

Immunogen

A peptide corresponding to the C-terminus of human CK-10 was used as the immunogen for the recombinant Cytokeratin 10 antibody.

Storage

Store the recombinant Cytokeratin 10 antibody at -20oC.