

## Cytokeratin 10 Antibody [clone DE-K10] (V3188)

Catalog No.	Formulation	Size
V3188-100UG	0.2 mg/ml in 1X PBS with 0.1 mg/ml BSA (US sourced) and 0.05% sodium azide	100 ug
V3188-20UG	0.2 mg/ml in 1X PBS with 0.1 mg/ml BSA (US sourced) and 0.05% sodium azide	20 ug
V3188SAF-100UG	1 mg/ml in 1X PBS; BSA free, sodium azide free	100 ug

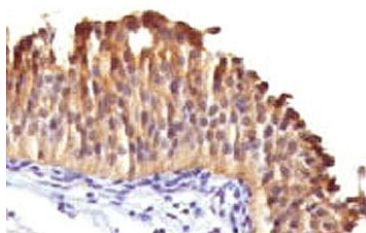


Citations (11)

[Bulk quote request](#)

Species Reactivity	Human
Format	Purified
Host	Mouse
Clonality	Monoclonal (mouse origin)
Isotype	Mouse IgG1, kappa
Clone Name	DE-K10
Purity	Protein G affinity chromatography
Buffer	1X PBS, pH 7.4
Gene ID	3858
Localization	Cytoplasmic
Applications	Immunohistochemistry (FFPE) : 1-2ug/ml for 30 min at RT
Limitations	This Cytokeratin 10 antibody is available for research use only.

IHC testing of human bladder carcinoma with Cytokeratin 10 antibody (clone DE-K10).



## Description

Keratin-10 is a member of the type I (acidic) cytokeratin family, which belongs to the superfamily of intermediate filament (IF) proteins. Keratins are heteropolymeric structural proteins which form the intermediate filament. These filaments, along with actin microfilaments and microtubules, compose the cytoskeleton of epithelial cells. Mutations in this gene are associated with epidermolytic hyperkeratosis. [Wiki]

## Application Notes

Optimal dilution of the Cytokeratin 10 antibody should be determined by the researcher.

1. Staining of FFPE tissue requires boiling sections in 10mM citrate buffer, pH6, for 10-20 min followed by cooling at RT for 20 min.

## Immunogen

A cytoskeletal preparation from human ectocervical epithelium was used as the immunogen for this Cytokeratin 10 antibody.

## Storage

Store the Cytokeratin 10 antibody at 2-8oC (with azide) or aliquot and store at -20oC or colder (without azide).

## References (2)