

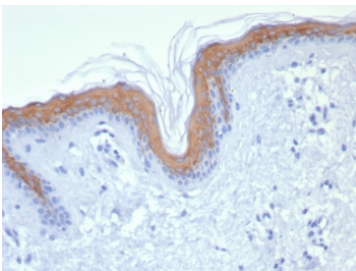
Cytokeratin 1 Antibody / CK1 / KRT1 [clone KRT1/8342R] (V4284)

Catalog No.	Formulation	Size
V4284-100UG	0.2 mg/ml in 1X PBS with 0.1 mg/ml BSA (US sourced), 0.05% sodium azide	100 ug
V4284-20UG	0.2 mg/ml in 1X PBS with 0.1 mg/ml BSA (US sourced), 0.05% sodium azide	20 ug
V4284SAF-100UG	1 mg/ml in 1X PBS; BSA free, sodium azide free	100 ug

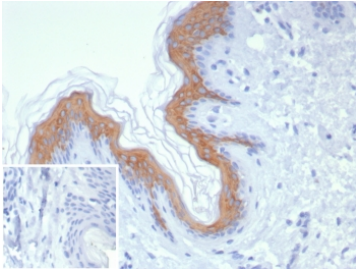
Recombinant **RABBIT MONOCLONAL**

[Bulk quote request](#)

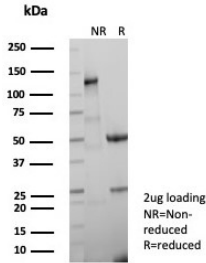
Availability	1-3 business days
Species Reactivity	Human
Format	Purified
Host	Rabbit
Clonality	Recombinant Rabbit Monoclonal
Isotype	Rabbit IgG, kappa
Clone Name	KRT1/8342R
Purity	Protein A/G affinity
UniProt	P04264
Localization	Cytoplasm
Applications	Immunohistochemistry (FFPE) : 1-2ug/ml for 30 minutes at RT
Limitations	This Cytokeratin 1 antibody is available for research use only.



IHC staining of FFPE human skin tissue with Cytokeratin 1 antibody (clone KRT1/8342R). HIER: boil tissue sections in pH 9 10mM Tris with 1mM EDTA for 20 min and allow to cool before testing.



IHC staining of FFPE human skin tissue with Cytokeratin 1 antibody (clone KRT1/8342R). Inset: PBS used in place of primary Ab (secondary Ab negative control).
HIER: boil tissue sections in pH 9 10mM Tris with 1mM EDTA for 20 min and allow to cool before testing.



SDS-PAGE analysis of purified, BSA-free KRT1 antibody (clone KRT1/8342R) as confirmation of integrity and purity.

Description

Keratins are a family of intermediate filament proteins that assemble into filaments through forming heterodimers of one type I keratin (keratins 9 to 23) and one type II keratin (keratins 1 to 8). Keratins demonstrate tissue and differentiation specific expression profiles. Cytokeratin 1 is a hetero-tetramer of two type I as well as two type II keratins, keratin-10 (KRT10). Keratin 1 is differentiation specific keratin that is one of the predominant keratins in suprabasal keratinocytes in stratified epithelia. Mutations in keratin 1 cause epidermolytic hyperkeratosis.

Application Notes

Optimal dilution of the Cytokeratin 1 antibody should be determined by the researcher.

Immunogen

Recombinant full-length human protein was used as the immunogen for the Cytokeratin 1 antibody.

Storage

Aliquot the Cytokeratin 1 antibody and store frozen at -20oC or colder. Avoid repeated freeze-thaw cycles.