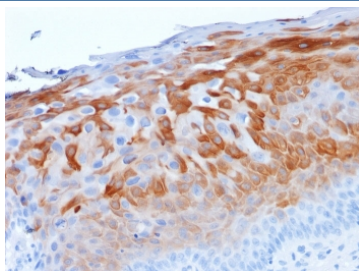


## Cytokeratin 1 Antibody / CK1 / Keratin 1 [clone LHK1] (V7907)

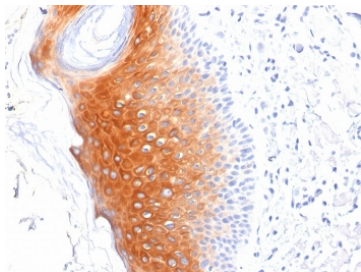
Catalog No.	Formulation	Size
V7907-100UG	0.2 mg/ml in 1X PBS with 0.1 mg/ml BSA (US sourced) and 0.05% sodium azide	100 ug
V7907-20UG	0.2 mg/ml in 1X PBS with 0.1 mg/ml BSA (US sourced) and 0.05% sodium azide	20 ug
V7907SAF-100UG	1 mg/ml in 1X PBS; BSA free, sodium azide free	100 ug

[Bulk quote request](#)

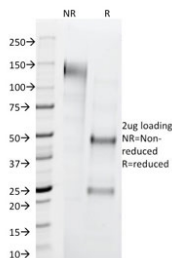
<b>Availability</b>	1-3 business days
<b>Species Reactivity</b>	Human, Rat
<b>Format</b>	Purified
<b>Host</b>	Mouse
<b>Clonality</b>	Monoclonal (mouse origin)
<b>Isotype</b>	Mouse IgG2a, kappa
<b>Clone Name</b>	LHK1
<b>Purity</b>	Protein G affinity chromatography
<b>UniProt</b>	P04264
<b>Localization</b>	Cytoplasmic
<b>Applications</b>	Immunohistochemistry (FFPE) : 0.1-0.2ug/ml
<b>Limitations</b>	This Cytokeratin 1 antibody is available for research use only.



IHC staining of FFPE human cervix with Cytokeratin 1 antibody (clone LHK1). HIER: boil tissue sections in pH 9 10mM Tris with 1mM EDTA for 20 min and allow to cool before testing.



IHC staining of FFPE human skin with Cytokeratin 1 antibody (clone LHK1). HIER: boil tissue sections in pH 9 10mM Tris with 1mM EDTA for 20 min and allow to cool before testing.



SDS-PAGE analysis of purified, BSA-free Cytokeratin 1 antibody (clone LHK1) as confirmation of integrity and purity.

## Description

Keratins are a family of intermediate filament proteins that assemble into filaments through forming heterodimers of one type I keratin (keratins 9 to 23) and one type II keratin (keratins 1 to 8). Keratins demonstrate tissue and differentiation specific expression profiles. Cytokeratin 1 is a hetero-tetramer of two type I as well as two type II keratins, keratin-10 (KRT10). Keratin 1 is differentiation specific keratin that is one of the predominant keratins in suprabasal keratinocytes in stratified epithelia. Mutations in keratin 1 cause epidermolytic hyperkeratosis.

## Application Notes

Optimal dilution of the Cytokeratin 1 antibody should be determined by the researcher.

## Immunogen

Amino acids VRFVSTSYSGVTR from the C-terminal portion of the protein was used as the immunogen for this Cytokeratin 1 antibody.

## Storage

Store the Cytokeratin 1 antibody at 2-8°C (with azide) or aliquot and store at -20°C or colder (without azide).