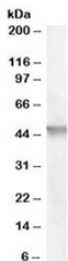


## Cytohesin 2 Antibody (R33732)

Catalog No.	Formulation	Size
R33732-100UG	0.5 mg/ml in 1X TBS, pH7.3, with 0.5% BSA (US sourced) and 0.02% sodium azide	100 ug

[Bulk quote request](#)

<b>Availability</b>	1-3 business days
<b>Species Reactivity</b>	Human, Rat
<b>Predicted Reactivity</b>	Dog, Mouse
<b>Format</b>	Antigen affinity purified
<b>Host</b>	Goat
<b>Clonality</b>	Polyclonal (goat origin)
<b>Isotype</b>	Goat Ig
<b>Purity</b>	Antigen affinity
<b>Gene ID</b>	9266
<b>Applications</b>	Western Blot : 0.5-1.5ug/ml ELISA (peptide) LOD : 1:32000
<b>Limitations</b>	This Cytohesin 2 antibody is available for research use only.



Western blot testing of human cerebellum lysate with Cytohesin 2 antibody at 0.5ug/ml.  
Predicted molecular weight: ~47kDa.

### Description

Additional name(s) for this target protein: Pleckstrin homology, Sec7 and coiled-coil domains 2; ARNO; PSCD2

### Application Notes

Optimal dilution of the Cytohesin 2 antibody should be determined by the researcher.

## **Immunogen**

Amino acids EDGVYEPPDLTP were used as the immunogen for this Cytohesin 2 antibody.

## **Storage**

Aliquot and store the Cytohesin 2 antibody at -20oC.