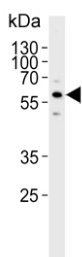


## Cytochrome P450 3A5 Antibody / CYP3A5 (F54950)

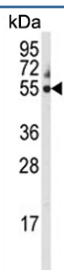
Catalog No.	Formulation	Size
F54950-0.4ML	In 1X PBS, pH 7.4, with 0.09% sodium azide	0.4 ml
F54950-0.08ML	In 1X PBS, pH 7.4, with 0.09% sodium azide	0.08 ml

[Bulk quote request](#)

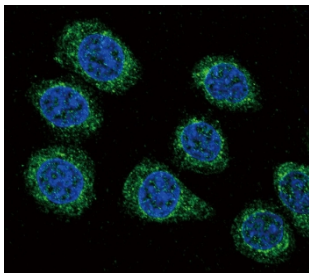
<b>Availability</b>	1-3 business days
<b>Species Reactivity</b>	Human
<b>Format</b>	Purified
<b>Clonality</b>	Polyclonal (rabbit origin)
<b>Isotype</b>	Rabbit Ig
<b>Purity</b>	Purified
<b>UniProt</b>	P20815
<b>Localization</b>	Cytoplasmic
<b>Applications</b>	Western Blot : 1:500-1:1000 Immunofluorescence : 1:10-1:50 Immunohistochemistry (FFPE) : 1:10-1:50
<b>Limitations</b>	This Cytochrome P450 3A5 antibody is available for research use only.



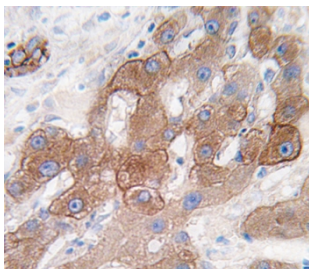
Western blot testing of human SK-BR-3 cell lysate with Cytochrome P450 3A5 antibody.  
Predicted molecular weight ~57 kDa.



Western blot testing of human HEK293 cell lysate with Cytochrome P450 3A5 antibody.  
Predicted molecular weight ~57 kDa.



Immunofluorescent staining of human HEK293 cells with Cytochrome P450 3A5 antibody (green) and DAPI nuclear stain (blue).



IHC testing of FFPE human hepatocellular carcinoma tissue with Cytochrome P450 3A5 antibody. HIER: steam section in pH6 citrate buffer for 20 min and allow to cool prior to staining.

## Description

CYP3A5 is a member of the cytochrome P450 superfamily of enzymes. The cytochrome P450 proteins are monooxygenases which catalyze many reactions involved in drug metabolism and synthesis of cholesterol, steroids and other lipids. This protein localizes to the endoplasmic reticulum and its expression is induced by glucocorticoids and some pharmacological agents. The enzyme metabolizes drugs such as nifedipine and cyclosporine as well as the steroid hormones testosterone, progesterone and androstenedione.

## Application Notes

The stated application concentrations are suggested starting points. Titration of the Cytochrome P450 3A5 antibody may be required due to differences in protocols and secondary/substrate sensitivity.

## Immunogen

A portion of amino acids 476-502 from the human protein was used as the immunogen for the Cytochrome P450 3A5 antibody.

## Storage

Aliquot the Cytochrome P450 3A5 antibody and store frozen at -20°C or colder. Avoid repeated freeze-thaw cycles.