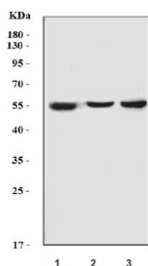


Cytochrome P450 2E1 Antibody / CYP2E1 [clone 2C7G1] (RQ6970)

Catalog No.	Formulation	Size
RQ6970	0.5mg/ml if reconstituted with 0.2ml sterile DI water	100 ug

Bulk quote request

Availability	1-3 business days
Species Reactivity	Human, Mouse, Rat
Format	Antigen affinity purified
Host	Mouse
Clonality	Monoclonal (mouse origin)
Isotype	Mouse IgG2b
Clone Name	2C7G1
Purity	Antigen affinity purified
Buffer	Lyophilized from 1X PBS with 2% Trehalose
UniProt	P05181
Applications	Western Blot : 0.5-1 ug/ml
Limitations	This Cytochrome P450 2E1 antibody is available for research use only.



Western blot testing of 1) human HCCP, 2) rat liver and 3) mouse liver lysate with Cytochrome P450 2E1 antibody. Predicted molecular weight ~57 kDa.

Description

Cytochrome P450 2E1 (abbreviated CYP2E1), a member of the cytochrome P450 mixed-function oxidase system, is involved in the metabolism of xenobiotics in the body. In humans, the CYP2E1 enzyme is encoded by the CYP2E1 gene. It is mapped to 10q26.3. While it is involved in the oxidative metabolism of a small range of substrates (mostly small polar molecules), there are many important drug interactions mediated by CYP2E1. Most drugs undergo deactivation by CYP2E1, either directly or by facilitated excretion from the body. Also, many substances are bioactivated by CYP2E1 to

form their active compounds. In addition, CYP2E1 is an important enzyme for the conversion of ethanol to acetaldehyde and to acetate in humans. In the conversion sequence of acetyl-CoA to glucose, CYP2E1 transforms acetone via acetol into propylene glycol and methylglyoxal, the precursors of pyruvate, acetate and lactate.

Application Notes

Optimal dilution of the Cytochrome P450 2E1 antibody should be determined by the researcher.

Immunogen

Recombinant human Cytochrome P450 2E1/CYP2E1 protein (amino acids H355-S493) was used as the immunogen for the Cytochrome P450 2E1 antibody.

Storage

After reconstitution, the Cytochrome P450 2E1 antibody can be stored for up to one month at 4°C. For long-term, aliquot and store at -20°C. Avoid repeated freezing and thawing.