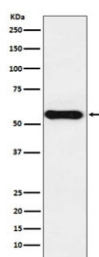


## Cytochrome P450 1A2 Antibody / CYP1A2 [clone AFAl-3] (RQ5110)

Catalog No.	Formulation	Size
RQ5110	Antibody in PBS with 0.02% sodium azide, 50% glycerol and 0.4-0.5mg/ml BSA	100 ul

[Bulk quote request](#)

Availability	1-2 weeks
Species Reactivity	Human
Format	Purified
Clonality	Rabbit Monoclonal
Isotype	Rabbit IgG
Clone Name	AFAl-3
Purity	Affinity purified
UniProt	P05177
Applications	Western Blot : 1:500-1:2000
Limitations	This Cytochrome P450 1A2 antibody is available for research use only.



Western blot testing with Cytochrome P450 1A2 antibody. Predicted molecular weight ~58 kDa.

### Description

Cytochromes P450 are a group of heme-thiolate monooxygenases. In liver microsomes, this enzyme is involved in an NADPH-dependent electron transport pathway. [UniProt]

### Application Notes

Optimal dilution of the Cytochrome P450 1A2 antibody should be determined by the researcher.

### Immunogen

A synthetic peptide specific to human Cytochrome P450 1A2 / CYP1A2 was used as the immunogen for the Cytochrome P450 1A2 antibody.

## Storage

Store the Cytochrome P450 1A2 antibody at -20oC.