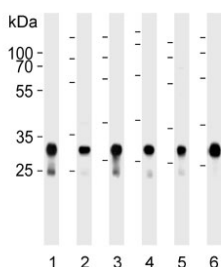


## Cytochrome C1 Antibody / CYC1 (F54386)

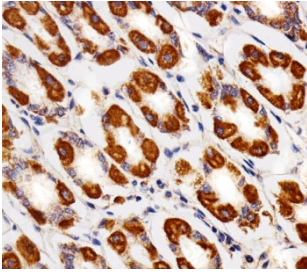
Catalog No.	Formulation	Size
F54386-0.4ML	In 1X PBS, pH 7.4, with 0.09% sodium azide	0.4 ml
F54386-0.08ML	In 1X PBS, pH 7.4, with 0.09% sodium azide	0.08 ml

[Bulk quote request](#)

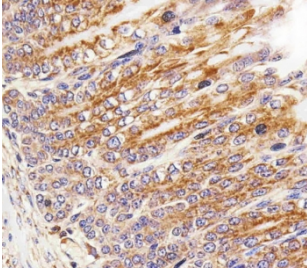
<b>Availability</b>	1-3 business days
<b>Species Reactivity</b>	Human, Mouse
<b>Format</b>	Purified
<b>Host</b>	Rabbit
<b>Clonality</b>	Polyclonal (rabbit origin)
<b>Isotype</b>	Rabbit Ig
<b>Purity</b>	Antigen affinity purified
<b>UniProt</b>	P08574
<b>Localization</b>	Cytoplasmic
<b>Applications</b>	Immunohistochemistry (FFPE) : 1:25 Immunofluorescence : 1:25 Western Blot : 1:500-1:2000
<b>Limitations</b>	This Cytochrome C1 antibody is available for research use only.



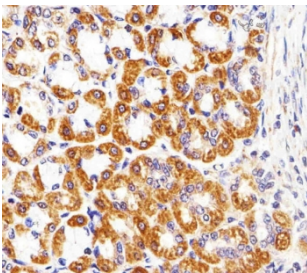
Western blot testing of human 1) A431, 2) HeLa, 3) HepG2, 4) MCF7, 5) U-251 MG and 6) mouse brain lysate with Cytochrome C1 antibody. Predicted molecular weight ~35 kDa.



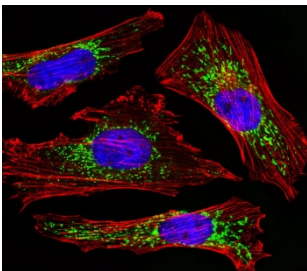
IHC testing of FFPE human stomach tissue with Cytochrome C1 antibody. HIER: steam section in pH6 citrate buffer for 20 min and allow to cool prior to staining.



IHC testing of FFPE mouse stomach tissue with Cytochrome C1 antibody. HIER: steam section in pH6 citrate buffer for 20 min and allow to cool prior to staining.



IHC testing of FFPE rat stomach tissue with Cytochrome C1 antibody. HIER: steam section in pH6 citrate buffer for 20 min and allow to cool prior to staining.



Immunofluorescent staining of fixed and permeabilized human HeLa cells with Cytochrome C1 antibody (green), DAPI nuclear stain (blue) and anti-Actin (red).

## Description

This is the heme-containing component of the cytochrome b-c1 complex, which accepts electrons from Rieske protein and transfers electrons to cytochrome c in the mitochondrial respiratory chain.

## Application Notes

The stated application concentrations are suggested starting points. Titration of the Cytochrome C1 antibody may be required due to differences in protocols and secondary/substrate sensitivity.

## Immunogen

A portion of amino acids 142-176 from the human protein was used as the immunogen for the Cytochrome C1 antibody.

## Storage

Aliquot the Cytochrome C1 antibody and store frozen at -20oC or colder. Avoid repeated freeze-thaw cycles.

