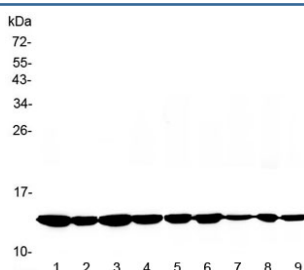


Cytochrome C Antibody (R32947)

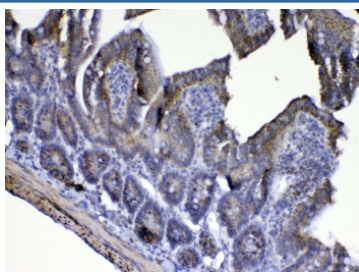
Catalog No.	Formulation	Size
R32947	0.5mg/ml if reconstituted with 0.2ml sterile DI water	100 ug

Bulk quote request

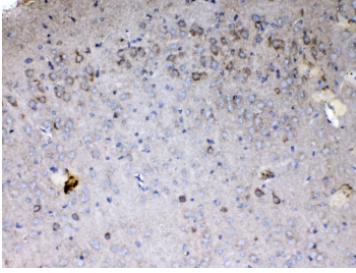
Availability	1-3 business days
Species Reactivity	Human, Mouse, Rat
Format	Antigen affinity purified
Host	Rabbit
Clonality	Polyclonal (rabbit origin)
Isotype	Rabbit IgG
Purity	Antigen affinity
Buffer	Lyophilized from 1X PBS with 2.5% BSA, 0.025% sodium azide
UniProt	P62897
Localization	Cytoplasmic
Applications	Western Blot : 0.5-1ug/ml IHC (FFPE) : 1-2ug/ml
Limitations	This Cytochrome C antibody is available for research use only.



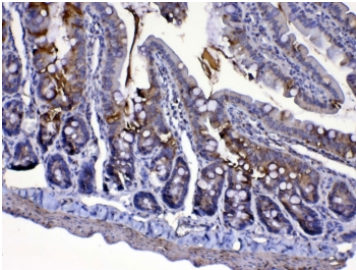
Western blot testing of 1) rat brain, 2) rat heart, 3) mouse brain, 4) mouse heart and human 5) HeLa, 6) MCF7, 7) 293T, 8) HepG2 and 9) Jurkat lysate with Cytochrome C antibody at 0.5ug/ml. Predicted molecular weight: 12~14 kDa.



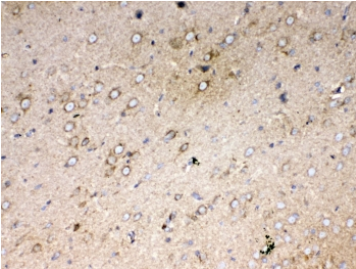
IHC testing of FFPE mouse intestine tissue with Cytochrome C antibody at 1ug/ml. Required HIER: steam section in pH6 citrate buffer for 20 min and allow to cool prior to testing.



IHC testing of FFPE mouse brain tissue with Cytochrome C antibody at 1ug/ml. Required HIER: steam section in pH6 citrate buffer for 20 min and allow to cool prior to testing.



IHC testing of FFPE rat intestine tissue with Cytochrome C antibody at 1ug/ml. Required HIER: steam section in pH6 citrate buffer for 20 min and allow to cool prior to testing.



IHC testing of FFPE rat brain tissue with Cytochrome C antibody at 1ug/ml. Required HIER: steam section in pH6 citrate buffer for 20 min and allow to cool prior to testing.

Description

CYCS is also known as CYC, HCS or THC4. This gene encodes a small heme protein that functions as a central component of the electron transport chain in mitochondria. The encoded protein associates with the inner membrane of the mitochondrion where it accepts electrons from cytochrome b and transfers them to the cytochrome oxidase complex. This protein is also involved in initiation of apoptosis. Mutations in this gene are associated with autosomal dominant nonsyndromic thrombocytopenia. Numerous processed pseudogenes of this gene are found throughout the human genome.

Application Notes

Optimal dilution of the Cytochrome C antibody should be determined by the researcher.

Immunogen

A recombinant mouse protein corresponding to amino acids G2-E105 was used as the immunogen for the Cytochrome C antibody.

Storage

After reconstitution, the Cytochrome C antibody can be stored for up to one month at 4oC. For long-term, aliquot and store at -20oC. Avoid repeated freezing and thawing.

