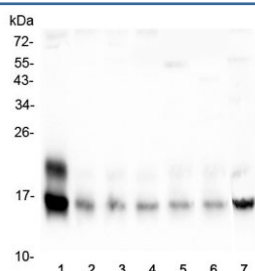


## Cystatin C Antibody / Cystatin 3 (RQ4450)

Catalog No.	Formulation	Size
RQ4450	0.5mg/ml if reconstituted with 0.2ml sterile DI water	100 ug

**Bulk quote request**

<b>Availability</b>	1-3 business days
<b>Species Reactivity</b>	Mouse
<b>Format</b>	Antigen affinity purified
<b>Clonality</b>	Polyclonal (rabbit origin)
<b>Isotype</b>	Rabbit IgG
<b>Purity</b>	Antigen affinity
<b>Buffer</b>	Lyophilized from 1X PBS with 2% Trehalose and 0.025% sodium azide
<b>UniProt</b>	P21460
<b>Localization</b>	Secreted
<b>Applications</b>	Western Blot : 0.5-1ug/ml ELISA (capture) : 1-5ug/ml (mouse recombinant protein)
<b>Limitations</b>	This Cystatin C antibody is available for research use only.



Western blot testing of mouse 1) brain, 2) spleen, 3) heart, 4) lung, 5) kidney, 6) testis and 7) HEPA1-6 lysate with Cystatin C antibody. Predicted molecular weight ~16 kDa.

## Description

Cystatin C or cystatin 3, a protein encoded by the CST3 gene, is mainly used as a biomarker of kidney function. Recently, it has been studied for its role in predicting new-onset or deteriorating cardiovascular disease. It also seems to play a role in brain disorders involving amyloid, such as Alzheimer's disease. In humans, all cells with a nucleus (cell core containing the DNA) produce cystatin C as a chain of 120 amino acids. It is found in virtually all tissues and body fluids. It is a potent inhibitor of lysosomal proteinases (enzymes from a special subunit of the cell that break down proteins) and probably one of the most important extracellular inhibitors of cysteine proteases (it prevents the breakdown of proteins outside the cell).

by a specific type of protein degrading enzymes). Cystatin C belongs to the type 2 cystatin gene family.

## Application Notes

Optimal dilution of the Cystatin C antibody should be determined by the researcher.

## Immunogen

Mouse Cystatin C recombinant protein (amino acids A21-A140) was used as the immunogen for the Cystatin C antibody.

## Storage

After reconstitution, the Cystatin C antibody can be stored for up to one month at 4°C. For long-term, aliquot and store at -20°C. Avoid repeated freezing and thawing.