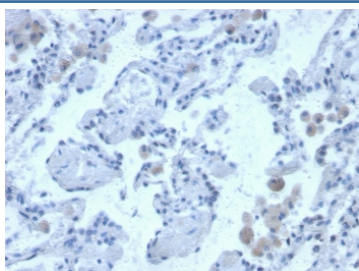


Cystatin B Antibody [clone CPTC-CSTB-3] (V8489)

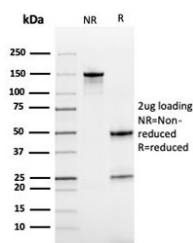
Catalog No.	Formulation	Size
V8489-100UG	0.2 mg/ml in 1X PBS with 0.1 mg/ml BSA (US sourced) and 0.05% sodium azide	100 ug
V8489-20UG	0.2 mg/ml in 1X PBS with 0.1 mg/ml BSA (US sourced) and 0.05% sodium azide	20 ug
V8489SAF-100UG	1 mg/ml in 1X PBS; BSA free, sodium azide free	100 ug

[Bulk quote request](#)

Availability	1-3 business days
Species Reactivity	Human
Format	Purified
Host	Mouse
Clonality	Monoclonal (mouse origin)
Isotype	Mouse IgG1, kappa
Clone Name	CPTC-CSTB-3
Purity	Protein G affinity chromatography
UniProt	P04080
Localization	Cytoplasm and nucleus
Applications	Western Blot : 1-2ug/ml Immunohistochemistry (FFPE) : 1-2ug/ml for 30 minutes at RT
Limitations	This Cystatin B antibody is available for research use only.



IHC staining of FFPE human lung with Cystatin B antibody. HIER: boil tissue sections in pH 9 10mM Tris with 1mM EDTA for 20 min and allow to cool before testing.



SDS-PAGE analysis of purified, BSA-free Cystatin B antibody as confirmation of integrity and purity.

Description

Cystatin A (also designated STF1, STFA, stefin A or cystatin AS) and cystatin B (also designated PME, CST6, STFB, CPI-B, stefin B and liver thiol proteinase inhibitor) are thiol protease inhibitors that form complexes with papain and the cathepsins B, H, and L. cystatin A, a cytoplasmic protein, is one of the precursor proteins of the cornified cell envelope in keratinocytes and plays a role in epidermal development and maintenance. cystatin B protects against intracellular proteases leaking out of lysosomes and is primarily expressed in heart, liver and kidney.

Application Notes

Optimal dilution of the Cystatin B antibody should be determined by the researcher.

Immunogen

Recombinant full-length human Cystatin B protein was used as the immunogen for the Cystatin B antibody.

Storage

Store the Cystatin B antibody at 2-8oC (with azide) or aliquot and store at -20oC or colder (without azide).