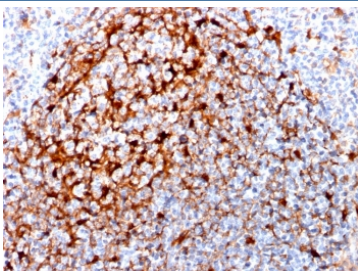


## Cystatin A Antibody / CSTA [clone CPTC-CSTA-1] (V7698)

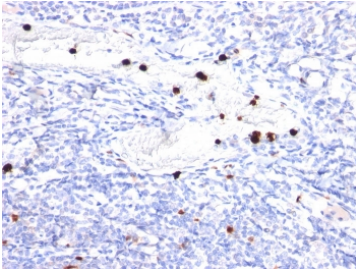
Catalog No.	Formulation	Size
V7698-100UG	0.2 mg/ml in 1X PBS with 0.1 mg/ml BSA (US sourced) and 0.05% sodium azide	100 ug
V7698-20UG	0.2 mg/ml in 1X PBS with 0.1 mg/ml BSA (US sourced) and 0.05% sodium azide	20 ug
V7698SAF-100UG	1 mg/ml in 1X PBS; BSA free, sodium azide free	100 ug

### Bulk quote request

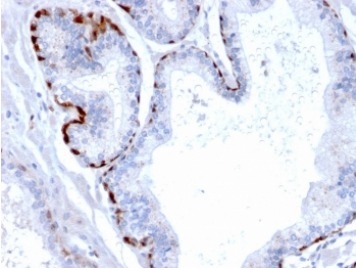
<b>Availability</b>	1-3 business days
<b>Species Reactivity</b>	Human
<b>Format</b>	Purified
<b>Host</b>	Mouse
<b>Clonality</b>	Monoclonal (mouse origin)
<b>Isotype</b>	Mouse IgG2c, kappa
<b>Clone Name</b>	CPTC-CSTA-1
<b>Purity</b>	Protein G affinity chromatography
<b>UniProt</b>	P01040
<b>Localization</b>	Cell Surface, Cytoplasmic and Nuclear
<b>Applications</b>	Immunohistochemistry (FFPE) : 1-2ug/ml Western Blot : 1-2ug/ml
<b>Limitations</b>	This Cystatin A antibody is available for research use only.



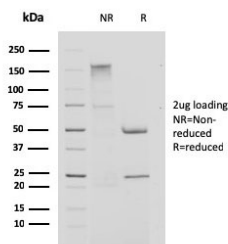
IHC staining of FFPE human tonsil with Cystatin A antibody (clone CPTC-CSTA-1).  
 HIER: boil tissue sections in pH 9 10mM Tris with 1mM EDTA for 10-20 min and allow to cool before testing.



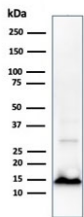
IHC staining of FFPE human tonsil with Cystatin A antibody (clone CPTC-CSTA-1).  
HIER: boil tissue sections in pH 9 10mM Tris with 1mM EDTA for 10-20 min and allow to cool before testing.



IHC staining of FFPE human prostate with Cystatin A antibody (clone CPTC-CSTA-1).  
HIER: boil tissue sections in pH 9 10mM Tris with 1mM EDTA for 10-20 min and allow to cool before testing.



SDS-PAGE analysis of purified, BSA-free Cystatin A antibody (clone CPTC-CSTA-1) as confirmation of integrity and purity.



Western blot testing of Cystatin A antibody and human A431 cell lysate (clone CPTC-CSTA-1). Predicted molecular weight ~11 kDa.

## Description

The cystatin superfamily encompasses proteins that contain multiple cystatin-like sequences. Some of the members are active cysteine protease inhibitors, while others have lost or perhaps never acquired this inhibitory activity. There are three inhibitory families in the superfamily, including the type 1 cystatins (stefins), type 2 cystatins, and kininogens. This gene encodes a stefin that functions as a cysteine protease inhibitor, forming tight complexes with papain and the cathepsins B, H, and L. The protein is one of the precursor proteins of cornified cell envelope in keratinocytes and plays a role in epidermal development and maintenance. Stefins have been proposed as prognostic and diagnostic tools for cancer.

For a reference Cystatin A antibody with validated specificity and consistent detection across applications, see [clone CSTA/3553](#).

## Application Notes

Optimal dilution of the Cystatin A antibody should be determined by the researcher.

## Immunogen

A recombinant human partial protein (amino acids 1-98) was used as the immunogen for the Cystatin A antibody.

## Storage

Store the Cystatin A antibody at 2-8oC (with azide) or aliquot and store at -20oC or colder (without azide).