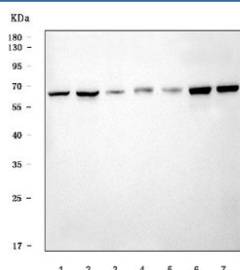


Cystathionine Beta Synthase Antibody / CBS [clone 7C3B7] (RQ7270)

Catalog No.	Formulation	Size
RQ7270	0.5mg/ml if reconstituted with 0.2ml sterile DI water	100 ug

Bulk quote request

Availability	1-3 business days
Species Reactivity	Human, Mouse, Rat
Format	Antigen affinity purified
Host	Mouse
Clonality	Monoclonal (mouse origin)
Isotype	Mouse IgG2b
Clone Name	7C3B7
Purity	Antigen affinity purified
Buffer	Lyophilized from 1X PBS with 2% Trehalose
UniProt	P35520
Applications	Western Blot : 0.5-1ug/ml
Limitations	This Cystathionine Beta Synthase antibody is available for research use only.



Western blot testing of 1) human HeLa, 2) human 293T, 3) human K562, 4) rat liver, 5) rat pancreas, 6) mouse liver and 7) mouse pancreas tissue lysate with Cystathionine Beta Synthase antibody. Predicted molecular weight ~61 kDa.

Description

CBS, Cystathionine Beta-Synthase, catalyzes the first irreversible step of transsulfuration. The CBS enzyme is a homotetramer of 63-kD subunits and requires pyridoxal phosphate and heme for activity. The CBS gene, which is mapped to chromosome 21q22, contains 23 exons, ranging in size from 42 to 299 bp. The human CBS protein can substitute for the endogenous yeast CBS protein in *Saccharomyces cerevisiae*. The catalytic domain of the CBS protein is located in the N-terminal 409 amino acids, and a regulatory domain is located in the C-terminal 142 amino acids.A

mutation that deletes the C-terminal 145 amino acids of CBS could restore activity of several CBS mutant alleles found in homocystinurics.

Application Notes

Optimal dilution of the Cystathionine Beta Synthase antibody should be determined by the researcher.

Immunogen

Recombinant human protein (amino acids K102-E342) was used as the immunogen for the Cystathionine Beta Synthase antibody.

Storage

After reconstitution, the Cystathionine Beta Synthase antibody can be stored for up to one month at 4°C. For long-term, aliquot and store at -20°C. Avoid repeated freezing and thawing.