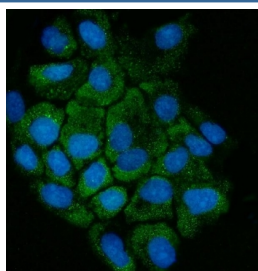


## Cystathionase Antibody / Cystathionine gamma lyase (R30633)

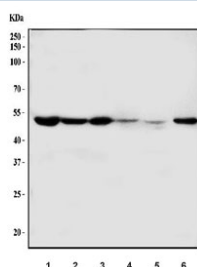
Catalog No.	Formulation	Size
R30633	0.5mg/ml if reconstituted with 0.2ml sterile DI water	100 ug

**Bulk quote request**

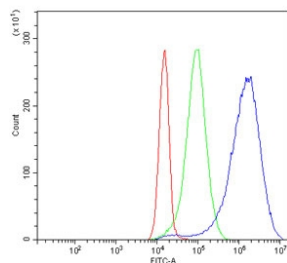
<b>Availability</b>	1-3 business days
<b>Species Reactivity</b>	Human, Mouse, Rat
<b>Format</b>	Antigen affinity purified
<b>Clonality</b>	Polyclonal (rabbit origin)
<b>Isotype</b>	Rabbit IgG
<b>Purity</b>	Antigen affinity
<b>Buffer</b>	Lyophilized from 1X PBS with 2% Trehalose
<b>UniProt</b>	P32929
<b>Applications</b>	Western Blot : 0.5-1ug/ml Immunofluorescence : 5ug/ml Flow Cytometry : 1-3ug/million cells
<b>Limitations</b>	This Cystathionase antibody is available for research use only.



Immunofluorescent staining of FFPE human A431 cells with Cystathionase antibody (green) and DAPI nuclear stain (blue). HIER: steam section in pH6 citrate buffer for 20 min.



Western blot testing of 1) human K562, 2) human HepG2, 3) human ThP-1, 4) human HCCT, 5) rat liver and 6) mouse liver tissue lysate with Cystathionase antibody. Predicted molecular weight ~44 kDa.



Flow cytometry testing of human JK cells with Cystathionase antibody at 1ug/million cells (blocked with goat sera); Red=cells alone, Green=isotype control, Blue= Cystathionase antibody.

## Description

Cystathionine gamma lyase (or Cystathionase) is an enzyme which breaks down cystathionine into cysteine and alpha-ketobutyrate. The International Radiation Hybrid Mapping Consortium mapped the CTH gene to chromosome 1. The gene had earlier been assigned to chromosome 16 by study of somatic cell hybrids. It is demonstrated that hydrogen sulfide(H<sub>2</sub>S) is physiologically generated by CTH.

## Application Notes

The stated application concentrations are suggested starting amounts. Titration of the Cystathionase antibody may be required due to differences in protocols and secondary/substrate sensitivity.

## Immunogen

An amino acid sequence from the C-terminus of human Cystathionine gamma lyase (FYIKGTLQHAEIFLKN) was used as the immunogen for this Cystathionase antibody.

## Storage

After reconstitution, the Cystathionase antibody can be stored for up to one month at 4oC. For long-term, aliquot and store at -20oC. Avoid repeated freezing and thawing.