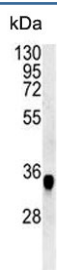


CYRIA Antibody / FAM49A (F54821)

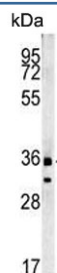
Catalog No.	Formulation	Size
F54821-0.4ML	In 1X PBS, pH 7.4, with 0.09% sodium azide	0.4 ml
F54821-0.08ML	In 1X PBS, pH 7.4, with 0.09% sodium azide	0.08 ml

Bulk quote request

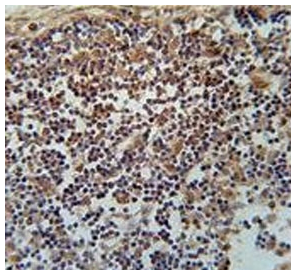
Availability	1-3 business days
Species Reactivity	Human, Mouse
Format	Purified
Clonality	Polyclonal (rabbit origin)
Isotype	Rabbit Ig
Purity	Antigen affinity purified
UniProt	Q9H0Q0
Applications	Flow Cytometry : 1:10-1:50 (1x10 ⁶ cells) Immunohistochemistry (FFPE) : 1:50-1:100 Western Blot : 1:500-1:1000
Limitations	This CYRIA antibody is available for research use only.



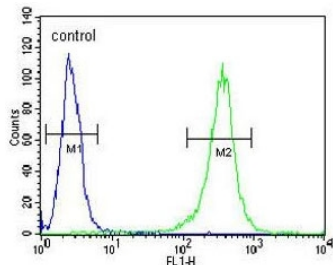
Western blot testing of mouse spleen tissue lysate with CYRIA antibody. Predicted molecular weight ~37 kDa.



Western blot testing of human NCI-H460 cell lysate with CYRIA antibody. Predicted molecular weight ~37 kDa.



IHC testing of FFPE human lymph node tissue with CYRIA antibody. HIER: steam section in pH6 citrate buffer for 20 min and allow to cool prior to staining.



Flow cytometry testing of human NCI-H460 cells with CYRIA antibody; Blue=isotype control, Green= CYRIA antibody.

Description

May negatively regulate RAC1 signaling and RAC1-driven cytoskeletal remodeling (Probable). May regulate chemotaxis, cell migration and epithelial polarization by controlling the polarity, plasticity, duration and extent of protrusions (Probable). [UniProt]

Application Notes

The stated application concentrations are suggested starting points. Titration of the CYRIA antibody may be required due to differences in protocols and secondary/substrate sensitivity.

Immunogen

A portion of amino acids 5-33 from the human protein was used as the immunogen for the CYRIA antibody.

Storage

Aliquot the CYRIA antibody and store frozen at -20oC or colder. Avoid repeated freeze-thaw cycles.