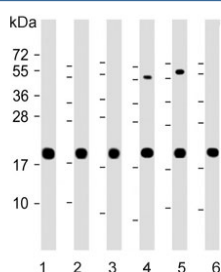


CYPB Antibody / Cyclophilin B (F54511)

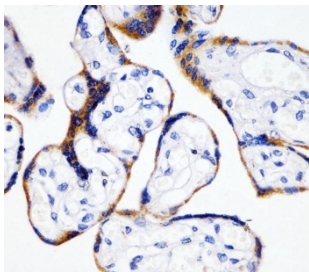
Catalog No.	Formulation	Size
F54511-0.2ML	In 1X PBS, pH 7.4, with 0.09% sodium azide	0.2 ml
F54511-0.05ML	In 1X PBS, pH 7.4, with 0.09% sodium azide	0.05 ml

[Bulk quote request](#)

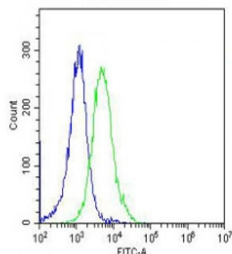
Availability	1-3 business days
Species Reactivity	Human, Mouse, Rat
Format	Purified
Host	Rabbit
Clonality	Polyclonal (rabbit origin)
Isotype	Rabbit Ig
Purity	Antigen affinity purified
UniProt	P23284
Localization	Cytoplasmic
Applications	Western Blot : 1:500-1:2000 Flow Cytometry : 1:25 (1x10 ⁶ cells) Immunohistochemistry (FFPE) : 1:25
Limitations	This CYPB antibody is available for research use only.



Western blot testing of 1) human HeLa, 2) human HepG2, 3) human A431, 4) mouse Ba/F3, 5) mouse NIH 3T3 and 6) rat PC-12 cell lysate with CYPB antibody. Expected molecular weight 19-23 kDa.



IHC testing of FFPE human placental tissue with CYPB antibody. HIER: steam section in pH6 citrate buffer for 20 min and allow to cool prior to staining.



Flow cytometry testing of fixed and permeabilized human HeLa cells with CYPB antibody; Blue=isotype control, Green= CYPB antibody.

Description

Peptidyl-prolyl cis-trans isomerase B/PPIB/Cyclophilin B/CYPB catalyzes the cis-trans isomerization of proline imidic peptide bonds in oligopeptides and may therefore assist protein folding. [UniProt]

Application Notes

The stated application concentrations are suggested starting points. Titration of the CYPB antibody may be required due to differences in protocols and secondary/substrate sensitivity.

Immunogen

Recombinant human protein was used as the immunogen for the CYPB antibody.

Storage

Aliquot the CYPB antibody and store frozen at -20oC or colder. Avoid repeated freeze-thaw cycles.