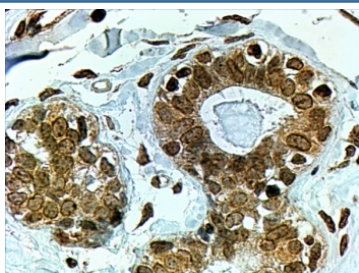


CYP7B1 Antibody (R36390)

| Catalog No. | Formulation | Size |
|--------------|---|--------|
| R36390-100UG | 0.5 mg/ml in 1X TBS, pH7.3, with 0.5% BSA (US sourced) and 0.02% sodium azide | 100 ug |

[Bulk quote request](#)

| | |
|--------------------|--|
| Availability | 1-3 business days |
| Species Reactivity | Human |
| Format | Antigen affinity purified |
| Clonality | Polyclonal (goat origin) |
| Isotype | Goat Ig |
| Purity | Antigen affinity |
| Gene ID | 9420 |
| Applications | Immunohistochemistry (FFPE) : 3-6ug/ml ELISA (peptide) LOD : 1:128000 |
| Limitations | This CYP7B1 antibody is available for research use only. |



IHC testing of FFPE human breast with CYP7B1 antibody at 4ug/ml. HIER: steamed with pH6 citrate buffer, HRP-staining.

Description

Additional name(s) for this target protein: Cytochrome P450, family 7, subfamily B, polypeptide 1

Application Notes

Optimal dilution of the CYP7B1 antibody should be determined by the researcher.

Immunogen

Amino acids YPDSVDLFRYKVK were used as the immunogen for this CYP7B1 antibody.

Storage

Aliquot and store the CYP7B1 antibody at -20oC.