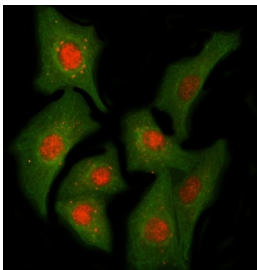


Cyp60 Antibody / Cyclophilin-60 / PPIL2 (RQ8205)

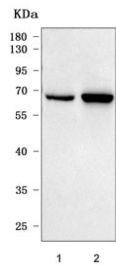
Catalog No.	Formulation	Size
RQ8205	0.5mg/ml if reconstituted with 0.2ml sterile DI water	100 ug

Bulk quote request

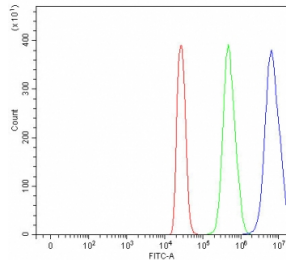
Availability	1-3 business days
Species Reactivity	Human
Format	Antigen affinity purified
Clonality	Polyclonal (rabbit origin)
Isotype	Rabbit IgG
Purity	Antigen affinity purified
Buffer	Lyophilized from 1X PBS with 2% Trehalose
UniProt	Q13356
Localization	Nuclear
Applications	Western Blot : 0.5-1ug/ml Immunofluorescence : 5ug/ml Flow Cytometry : 1-3ug/million cells Direct ELISA : 0.1-0.5ug/ml
Limitations	This Cyp60 antibody is available for research use only.



Immunofluorescent staining of FFPE human A549 cells with Cyp60 antibody (red) and Beta Tubulin mAb (green). HIER: steam section in pH6 citrate buffer for 20 min.



Western blot testing of human 1) 293T and 2) K562 cell lysate with Cyp60 antibody.
Predicted molecular weight ~59 kDa.



Flow cytometry testing of fixed and permeabilized human 293T cells with Cyp60 antibody at 1ug/million cells (blocked with goat sera); Red=cells alone, Green=isotype control, Blue= Cyp60 antibody.

Description

Peptidyl-prolyl cis-trans isomerase-like 2, also called Cyclophilin-60 (Cyp60), is an enzyme that in humans is encoded by the PPIL2 gene. This gene is a member of the cyclophilin family of peptidylprolyl isomerases. The cyclophilins are a highly conserved ubiquitous family, members of which play an important role in protein folding, immunosuppression by cyclosporin A, and infection of HIV-1 virions. This protein interacts with the proteinase inhibitor eglin c and is localized in the nucleus. Alternatively spliced transcript variants have been found for this gene.

Application Notes

Optimal dilution of the Cyp60 antibody should be determined by the researcher.

Immunogen

E. coli-derived recombinant human protein (amino acids D40-Q274) was used as the immunogen for the Cyp60 antibody.

Storage

After reconstitution, the Cyp60 antibody can be stored for up to one month at 4oC. For long-term, aliquot and store at -20oC. Avoid repeated freezing and thawing.