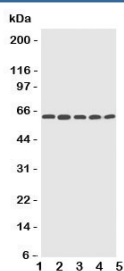


## CYP2U1 Antibody (R31130)

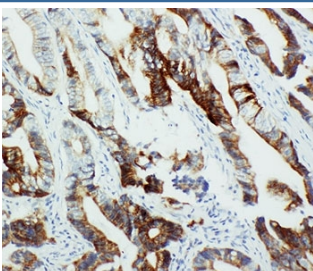
Catalog No.	Formulation	Size
R31130	0.5mg/ml if reconstituted with 0.2ml sterile DI water	100 ug

**Bulk quote request**

<b>Availability</b>	1-3 business days
<b>Species Reactivity</b>	Human
<b>Format</b>	Antigen affinity purified
<b>Clonality</b>	Polyclonal (rabbit origin)
<b>Isotype</b>	Rabbit IgG
<b>Purity</b>	Antigen affinity
<b>Buffer</b>	Lyophilized from 1X PBS with 2.5% BSA and 0.025% sodium azide/thimerosal
<b>UniProt</b>	Q7Z449
<b>Applications</b>	Western Blot : 0.5-1ug/ml IHC (FFPE) : 0.5-1ug/ml Immunocytochemistry : 0.5-1ug/ml
<b>Limitations</b>	This CYP2U1 antibody is available for research use only.



Western blot testing of CYP2U1 antibody and Lane 1: HeLa; 2: MCF-7; 3: MM453; 4: COLO320; 5: HT1080 cell lysate



IHC-P: CYP2U1 antibody testing of human intestinal cancer tissue

## Description

Cytochrome P450, Family 2, Subfamily U, Polypeptide 1 is a protein that in humans is encoded by the CYP2U1 gene. Members of the P450 enzyme family have roles in the tissue-specific conversion of substrates into locally active hormones, vitamins, and signaling molecules, including arachidonic acid derivatives known as eicosanoids. The International Radiation Hybrid Mapping Consortium mapped the gene to chromosome 4. Chuang et al. (2004) stated that CYP2U1 maps to 4q25. Using recombination experiments in Sf9 insect cells, Chuang et al. (2004) found that CYP2U1 metabolized arachidonic acid, docosahexaenoic acid (DHA), and other long chain fatty acids. Chuang et al. (2004) suggested that CYP2U1 may play a role in brain and immune functions.

## Application Notes

The stated application concentrations are suggested starting amounts. Titration of the CYP2U1 antibody may be required due to differences in protocols and secondary/substrate sensitivity.

## Immunogen

An amino acid sequence from the C-terminus of human Cytochrome P450, Family 2, Subfamily U, Polypeptide 1 (EKPEDFYFYPNRFLDDQGQ) was used as the immunogen for this CYP2U1 antibody.

## Storage

After reconstitution, the CYP2U1 antibody can be stored for up to one month at 4°C. For long-term, aliquot and store at -20°C. Avoid repeated freezing and thawing.