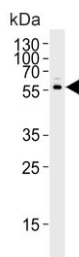


CYP2S1 Antibody (F54655)

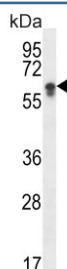
Catalog No.	Formulation	Size
F54655-0.4ML	In 1X PBS, pH 7.4, with 0.09% sodium azide	0.4 ml
F54655-0.08ML	In 1X PBS, pH 7.4, with 0.09% sodium azide	0.08 ml

[Bulk quote request](#)

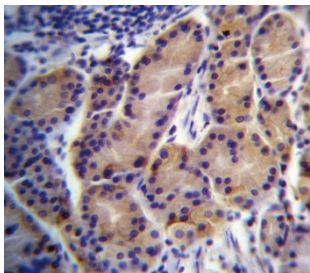
Availability	1-3 business days
Species Reactivity	Human
Format	Purified
Clonality	Polyclonal (rabbit origin)
Isotype	Rabbit Ig
Purity	Antigen affinity purified
UniProt	Q96SQ9
Localization	Cytoplasmic
Applications	Western Blot : 1:500-1:2000 Immunofluorescence : 1:25 Immunohistochemistry (FFPE) : 1:25
Limitations	This CYP2S1 antibody is available for research use only.



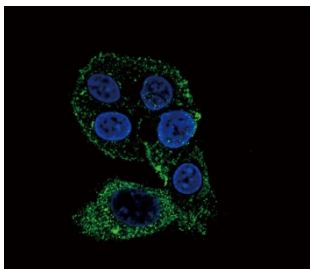
Western blot testing of human BEAS 2B cell lysate with CYP2S1 antibody. Predicted molecular weight ~56 kDa.



Western blot testing of human HepG2 cell lysate with CYP2S1 antibody. Predicted molecular weight ~56 kDa.



IHC testing of FFPE human stomach tissue with CYP2S1 antibody. HIER: steam section in pH6 citrate buffer for 20 min and allow to cool prior to staining.



Immunofluorescent staining of human HepG2 cells with CYP2S1 antibody (green) and DAPI nuclear stain (blue).

Description

This gene encodes a member of the cytochrome P450 superfamily of enzymes. The cytochrome P450 proteins are monooxygenases which catalyze many reactions involved in drug metabolism and synthesis of cholesterol, steroids and other lipids. This protein localizes to the endoplasmic reticulum. In rodents, the homologous protein has been shown to metabolize certain carcinogens; however, the specific function of the human protein has not been determined.

Application Notes

The stated application concentrations are suggested starting points. Titration of the CYP2S1 antibody may be required due to differences in protocols and secondary/substrate sensitivity.

Immunogen

A portion of amino acids 399-428 from the human protein was used as the immunogen for the CYP2S1 antibody.

Storage

Aliquot the CYP2S1 antibody and store frozen at -20oC or colder. Avoid repeated freeze-thaw cycles.