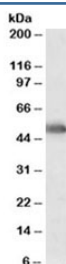


CYP2E1 Antibody (R35660)

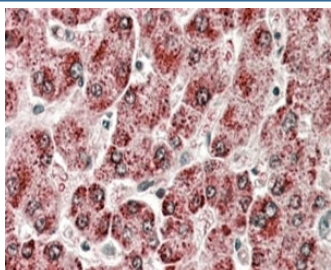
Catalog No.	Formulation	Size
R35660-100UG	0.5 mg/ml in 1X TBS, pH7.3, with 0.5% BSA (US sourced) and 0.02% sodium azide	100 ug

[Bulk quote request](#)

Availability	1-3 business days
Species Reactivity	Human
Format	Antigen affinity purified
Clonality	Polyclonal (goat origin)
Isotype	Goat Ig
Purity	Antigen affinity
Gene ID	1571
Applications	Western Blot : 0.05-0.2ug/ml Immunohistochemistry (FFPE) : 3-5ug/ml ELISA (peptide) LOD : 1:32000
Limitations	This CYP2E1 antibody is available for research use only.



Western blot testing of human liver lysate with CYP2E1 antibody at 0.05ug/ml. Predicted molecular weight ~56kDa.



IHC staining of FFPE human liver with CYP2E1 antibody at 4ug/ml. HIER: steamed with pH6 citrate buffer, AP-staining.

Description

Additional name(s) for this target protein: Cytochrome P450, family 2, subfamily E, polypeptide 1

Application Notes

Optimal dilution of the CYP2E1 antibody should be determined by the researcher.

Immunogen

Amino acids RKVIKNVAEVK were used as the immunogen for this CYP2E1 antibody.

Storage

Aliquot and store the CYP2E1 antibody at -20oC.