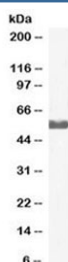


CYP2D6 Antibody (R36473)

Catalog No.	Formulation	Size
R36473-100UG	0.5 mg/ml in 1X TBS, pH7.3, with 0.5% BSA (US sourced) and 0.02% sodium azide	100 ug

[Bulk quote request](#)

Availability	1-3 business days
Species Reactivity	Human
Format	Antigen affinity purified
Host	Goat
Clonality	Polyclonal (goat origin)
Isotype	Goat Ig
Purity	Antigen affinity
UniProt	P10635
Applications	Western Blot : 1-3ug/ml ELISA (peptide) LOD : 1:1000
Limitations	This CYP2D6 antibody is available for research use only.



Western blot testing of human liver lysate with CYP2D6 antibody at 2ug/ml. Predicted molecular weight ~56 kDa.

Description

CYP2D6, a member of the cytochrome P450 mixed-function oxidase system, is one of the most important enzymes involved in the metabolism of xenobiotics in the body. In particular, CYP2D6 is responsible for the metabolism and elimination of approximately 25% of clinically used drugs, via the addition or removal of certain functional groups—specifically, hydroxylation, demethylation, and dealkylation—at various points along a substrate's core structure. This enzyme also metabolizes several endogenous substances, such as hydroxytryptamines, neurosteroids, and both m-tyramine and p-tyramine which CYP2D6 metabolizes into dopamine in the brain and liver. [Wiki]

Application Notes

Optimal dilution of the CYP2D6 antibody should be determined by the researcher.

Immunogen

Amino acids PTGQPRPSHH were used as the immunogen for this CYP2D6 antibody.

Storage

Aliquot and store the CYP2D6 antibody at -20oC.