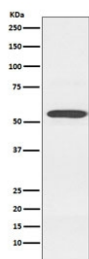


CYP2D6 Antibody / Cytochrome P450 2D6 [clone ADBO-3] (RQ5329)

Catalog No.	Formulation	Size
RQ5329	Antibody in PBS with 0.02% sodium azide, 50% glycerol and 0.4-0.5mg/ml BSA	100 ul

[Bulk quote request](#)

Availability	1-2 weeks
Species Reactivity	Human
Format	Purified
Clonality	Rabbit Monoclonal
Isotype	Rabbit IgG
Clone Name	ADBO-3
Purity	Affinity purified
UniProt	P10635
Applications	Western Blot : 1:500-1:1000
Limitations	This CYP2D6 antibody is available for research use only.



Western blot testing of human K562 cell lysate with CYP2D6 antibody. Predicted molecular weight ~56 kDa.

Description

Cytochrome P450 2D6 is a member of the cytochrome P450 superfamily of enzymes. The cytochrome P450 proteins are monooxygenases which catalyze many reactions involved in drug metabolism and synthesis of cholesterol, steroids and other lipids.

Application Notes

Optimal dilution of the CYP2D6 antibody should be determined by the researcher.

Immunogen

A synthetic peptide specific to human Cytochrome P450 2D6 / CYP2D6 was used as the immunogen for the CYP2D6 antibody.

Storage

Store the CYP2D6 antibody at -20oC.