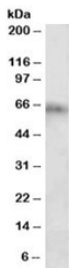


Cyp2d5 Antibody / Cyp2d10 (R33208)

Catalog No.	Formulation	Size
R33208-100UG	0.5 mg/ml in 1X TBS, pH7.3, with 0.5% BSA (US sourced) and 0.02% sodium azide	100 ug

[Bulk quote request](#)

Availability	1-3 business days
Species Reactivity	Rat
Format	Antigen affinity purified
Host	Goat
Clonality	Polyclonal (goat origin)
Isotype	Goat Ig
Purity	Antigen affinity
UniProt	P12939
Gene ID	286963
Applications	Western Blot : 1-3ug/ml ELISA (peptide) LOD : 1:32000
Limitations	This Cyp2d5 antibody is available for research use only.



Western blot testing of rat spleen lysate with Cyp2d5 antibody at 2ug/ml. Predicted molecular weight: ~57kDa, observed here at ~65kDa.

Description

Additional name(s) for this target protein: Cytochrome P450, family 2, subfamily d, polypeptide 5, Cyp2d10

Application Notes

Optimal dilution of the Cyp2d5 antibody should be determined by the researcher.

Immunogen

Amino acids CDAFTAQNGRSINPK were used as the immunogen for this Cyp2d5 antibody.

Storage

Aliquot and store the Cyp2d5 antibody at -20oC.