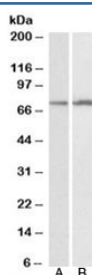


## CYP2B6 Antibody (R34297)

Catalog No.	Formulation	Size
R34297-100UG	0.5 mg/ml in 1X TBS, pH7.3, with 0.5% BSA (US sourced) and 0.02% sodium azide	100 ug

[Bulk quote request](#)

Availability	1-3 business days
Species Reactivity	Human
Format	Antigen affinity purified
Clonality	Polyclonal (goat origin)
Isotype	Goat Ig
Purity	Antigen affinity
Gene ID	1555
Applications	Western Blot : 0.1-0.3ug/ml ELISA (peptide) LOD : 1:128000
Limitations	This CYP2B6 antibody is available for research use only.



Western blot testing of HepG2 [A] and K562 [B] lysates with CYP2B6 antibody at 0.1ug/ml. Predicted molecular weight: ~56kDa, observed here at ~75kDa.

## Description

Additional name(s) for this target protein: Cytochrome P450, family 2, subfamily B, polypeptide 6

## Application Notes

Optimal dilution of the CYP2B6 antibody should be determined by the researcher.

## Immunogen

Amino acids HSVEKHRETLDPS were used as the immunogen for this CYP2B6 antibody.

## Storage

Aliquot and store the CYP2B6 antibody at -20oC.