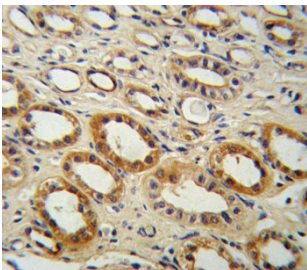


CYP27B1 Antibody (F54519)

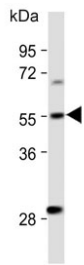
Catalog No.	Formulation	Size
F54519-0.2ML	In 1X PBS, pH 7.4, with 0.09% sodium azide	0.2 ml
F54519-0.05ML	In 1X PBS, pH 7.4, with 0.09% sodium azide	0.05 ml

[Bulk quote request](#)

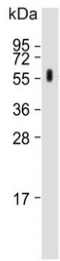
Availability	1-3 business days
Species Reactivity	Human, Rat
Format	Purified
Host	Rabbit
Clonality	Polyclonal (rabbit origin)
Isotype	Rabbit Ig
Purity	Antigen affinity purified
UniProt	O15528
Localization	Cytoplasmic
Applications	Western Blot : 1:500-1:2000 Immunohistochemistry (FFPE) : 1:25 Flow Cytometry : 1:25 (1x10 ⁶ cells)
Limitations	This CYP27B1 antibody is available for research use only.



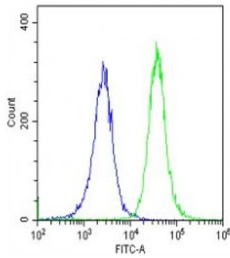
IHC testing of FFPE human kidney tissue with CYP27B1 antibody. HIER: steam section in pH6 citrate buffer for 20 min and allow to cool prior to staining.



Western blot testing of human T-47D cell lysate with CYP27B1 antibody. Predicted molecular weight ~57 kDa.



Western blot testing of rat kidney lysate with CYP27B1 antibody. Predicted molecular weight ~57 kDa.



Flow cytometry testing of fixed and permeabilized human HeLa cells with CYP27B1 antibody; Blue=isotype control, Green= CYP27B1 antibody.

Description

CYP27B1 is a member of the cytochrome P450 superfamily of enzymes. The cytochrome P450 proteins are monooxygenases which catalyze many reactions involved in drug metabolism and synthesis of cholesterol, steroids and other lipids. The protein encoded by this gene localizes to the inner mitochondrial membrane where it hydroxylates 25-hydroxyvitamin D₃ at the 1 α position. This reaction synthesizes 1 α ,25-dihydroxyvitamin D₃, the active form of vitamin D₃, which binds to the vitamin D receptor and regulates calcium metabolism. Thus this enzyme regulates the level of biologically active vitamin D and plays an important role in calcium homeostasis. Mutations in this gene can result in vitamin D-dependent rickets type I.

Application Notes

The stated application concentrations are suggested starting points. Titration of the CYP27B1 antibody may be required due to differences in protocols and secondary/substrate sensitivity.

Immunogen

A portion of amino acids 482-508 from the human protein was used as the immunogen for the CYP27B1 antibody.

Storage

Aliquot the CYP27B1 antibody and store frozen at -20°C or colder. Avoid repeated freeze-thaw cycles.

