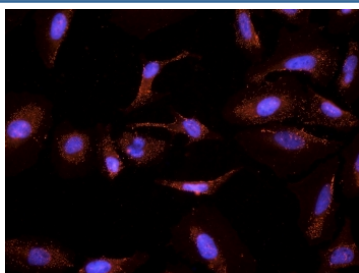


## CYP26A1 Antibody (R34861)

Catalog No.	Formulation	Size
R34861-100UG	0.5 mg/ml in 1X TBS, pH7.3, with 0.5% BSA (US sourced) and 0.02% sodium azide	100 ug

[Bulk quote request](#)

Availability	1-3 business days
Species Reactivity	Human
Format	Antigen affinity purified
Clonality	Polyclonal (goat origin)
Isotype	Goat Ig
Purity	Antigen affinity
Gene ID	1592
Applications	Immunohistochemistry (FFPE) : 4-6ug/ml Immunocytochemistry : 2-5ug/ml. ELISA (peptide) LOD : 1:16000
Limitations	This CYP26A1 antibody is available for research use only.



IHC testing of PFA-fixed and TX100-treated HeLa cells with CYP26A1 antibody at 2.5ug/ml (DAPI nuclear counterstaining in blue).

### Description

Additional name(s) for this target protein: Cytochrome P450, family 26, subfamily A, polypeptide 1

### Application Notes

Optimal dilution of the CYP26A1 antibody should be determined by the researcher.

### Immunogen

Amino acids NLPARFTHFHGE were used as the immunogen for this CYP26A1 antibody.

## **Storage**

Aliquot and store the CYP26A1 antibody at -20oC.