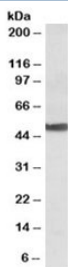


CYP24A1 Antibody (R35663)

Catalog No.	Formulation	Size
R35663-100UG	0.5 mg/ml in 1X TBS, pH7.3, with 0.5% BSA (US sourced) and 0.02% sodium azide	100 ug

[Bulk quote request](#)

Availability	1-3 business days
Species Reactivity	Human, Rat
Format	Antigen affinity purified
Host	Goat
Clonality	Polyclonal (goat origin)
Isotype	Goat Ig
Purity	Antigen affinity
Gene ID	1591
Applications	Western Blot : 0.1-0.3ug/ml ELISA (peptide) LOD : 1:32000
Limitations	This CYP24A1 antibody is available for research use only.



Western blot testing of human liver lysate with CYP24A1 antibody at 0.1 ug/ml. Predicted molecular weight: ~51kDa.

Description

Additional name(s) for this target protein: Cytochrome P450, family 24, subfamily A, polypeptide 1

Application Notes

Optimal dilution of the CYP24A1 antibody should be determined by the researcher.

Immunogen

Amino acids RKYDIQATDN were used as the immunogen for this CYP24A1 antibody.

Storage

Aliquot and store the CYP24A1 antibody at -20°C.