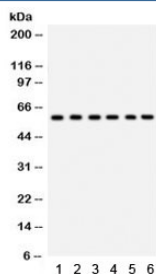


CYP24A1 Antibody (R32199)

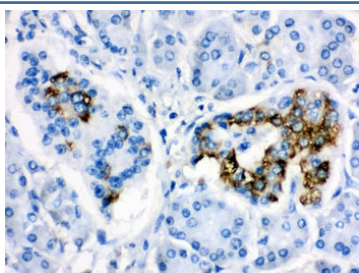
| Catalog No. | Formulation | Size |
|-------------|---|--------|
| R32199 | 0.5mg/ml if reconstituted with 0.2ml sterile DI water | 100 ug |

Bulk quote request

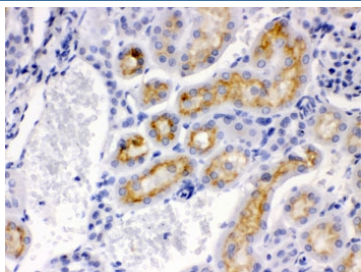
| | |
|---------------------------|---|
| Availability | 1-3 business days |
| Species Reactivity | Human, Mouse, Rat |
| Format | Antigen affinity purified |
| Clonality | Polyclonal (rabbit origin) |
| Isotype | Rabbit IgG |
| Purity | Antigen affinity |
| Buffer | Lyophilized from 1X PBS with 2.5% BSA and 0.025% sodium azide |
| UniProt | Q07973 |
| Localization | Cytoplasmic |
| Applications | Western Blot : 0.1-0.5ug/ml IHC (FFPE) : 0.5-1ug/ml |
| Limitations | This CYP24A1 antibody is available for research use only. |



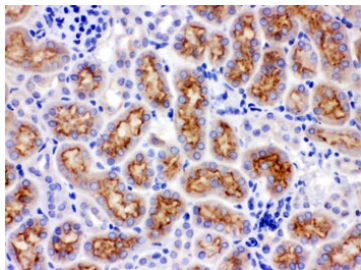
Western blot testing of 1) rat thymus, 2) rat lung, 3) HeLa, 4) 22RV1, 5) A431 and 6) mouse HEPA lysate with CYP24A1 antibody. Predicted/observed molecular weight ~59 kDa.



IHC testing of FFPE human pancreatic cancer tissue with CYP24A1 antibody. HIER: Boil the paraffin sections in pH 6, 10mM citrate buffer for 20 minutes and allow to cool prior to staining.



IHC testing of FFPE mouse kidney with CYP24A1 antibody. HIER: Boil the paraffin sections in pH 6, 10mM citrate buffer for 20 minutes and allow to cool prior to staining.



IHC testing of FFPE rat kidney with CYP24A1 antibody. HIER: Boil the paraffin sections in pH 6, 10mM citrate buffer for 20 minutes and allow to cool prior to staining.

Description

This gene encodes a member of the cytochrome P450 superfamily of enzymes. The cytochrome P450 proteins are monooxygenases which catalyze many reactions involved in drug metabolism and synthesis of cholesterol, steroids and other lipids. And this mitochondrial protein initiates the degradation of 1,25-dihydroxyvitamin D₃, the physiologically active form of vitamin D₃, by hydroxylation of the side chain. In regulating the level of vitamin D₃, this enzyme plays a role in calcium homeostasis and the vitamin D endocrine system. Alternatively spliced transcript variants encoding different isoforms have been found for this gene.

Application Notes

Optimal dilution of the CYP24A1 antibody should be determined by the researcher.

Immunogen

Amino acids 153-514 of human CYP24A1 were used as the immunogen for the CYP24A1 antibody.

Storage

After reconstitution, the CYP24A1 antibody can be stored for up to one month at 4°C. For long-term, aliquot and store at -20°C. Avoid repeated freezing and thawing.