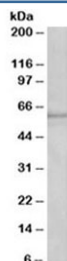


## Cyp1a2 Antibody (R34283)

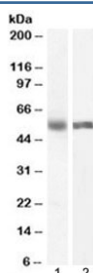
Catalog No.	Formulation	Size
R34283-100UG	0.5 mg/ml in 1X TBS, pH7.3, with 0.5% BSA (US sourced) and 0.02% sodium azide	100 ug

[Bulk quote request](#)

Availability	1-3 business days
Species Reactivity	Human, Mouse
Predicted Reactivity	Rat
Format	Antigen affinity purified
Clonality	Polyclonal (goat origin)
Isotype	Goat Ig
Purity	Antigen affinity
Gene ID	13077
Localization	Cytoplasmic, membrane
Applications	Western Blot : 1-3ug/ml ELISA (peptide) LOD : 1:32000
Limitations	This Cyp1a2 antibody is available for research use only.



Western blot testing of fetal mouse liver lysate with Cyp1a2 antibody at 1ug/ml.  
Predicted molecular weight ~58 kDa.



Western blot testing of human 1) liver and 2) lung lysate with Cyp1a2 antibody at 0.5ug/ml. Predicted molecular weight ~58 kDa.

## Description

Additional name(s) for this target protein: Cytochrome P450 1A2

## Application Notes

Optimal dilution of the Cyp1a2 antibody should be determined by the researcher.

1. This Cyp1a2 antibody will not detect Cyp1a1.

## Immunogen

Amino acids HSENYKDNGGLIPEEK were used as the immunogen for this Cyp1a2 antibody.

## Storage

Aliquot and store the Cyp1a2 antibody at -20oC.