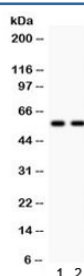


## CYP1A2 Antibody (R31892)

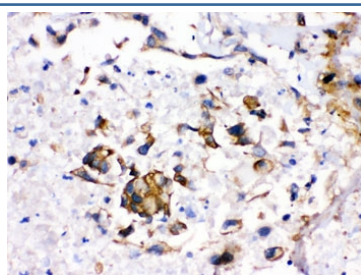
Catalog No.	Formulation	Size
R31892	0.5mg/ml if reconstituted with 0.2ml sterile DI water	100 ug

**Bulk quote request**

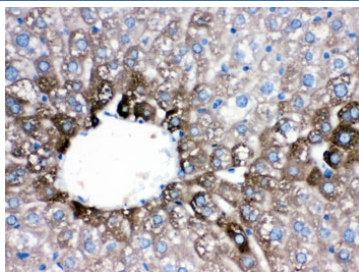
<b>Availability</b>	1-3 business days
<b>Species Reactivity</b>	Human, Mouse, Rat
<b>Format</b>	Antigen affinity purified
<b>Clonality</b>	Polyclonal (rabbit origin)
<b>Isotype</b>	Rabbit IgG
<b>Purity</b>	Antigen affinity
<b>Buffer</b>	Lyophilized from 1X PBS with 2.5% BSA and 0.025% sodium azide
<b>UniProt</b>	P05177
<b>Localization</b>	Cytoplasmic, membrane
<b>Applications</b>	Western Blot : 0.1-0.5ug/ml IHC (FFPE) : 0.5-1ug/ml
<b>Limitations</b>	This CYP1A2 antibody is available for research use only.



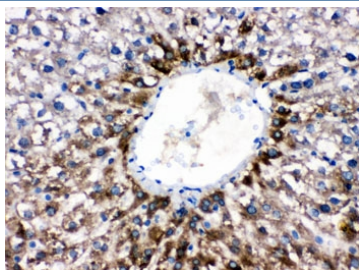
Western blot testing of 1) rat liver and 2) mouse liver lysate with CYP1A2 antibody. Predicted/observed molecular weight: ~58 kDa.



IHC testing of FFPE human liver cancer with CYP1A2 antibody. HIER: Boil the paraffin sections in pH 6, 10mM citrate buffer for 20 minutes and allow to cool prior to staining.



IHC testing of FFPE mouse liver with CYP1A2 antibody. HIER: Boil the paraffin sections in pH 6, 10mM citrate buffer for 20 minutes and allow to cool prior to staining.



IHC testing of FFPE rat liver with CYP1A2 antibody. HIER: Boil the paraffin sections in pH 6, 10mM citrate buffer for 20 minutes and allow to cool prior to staining.

## Description

CYP1A2 (Cytochrome P450, Subfamily I, Polypeptide 2) is a member of the cytochrome P450 mixed-function oxidase system and is involved in the metabolism of xenobiotics in the body. CYP1A2 is a member of the cytochrome P450 superfamily of enzymes. In humans, the CYP1A2 enzyme is encoded by the CYP1A2 gene. CYP1A2 localizes to the endoplasmic reticulum and its expression is induced by some polycyclic aromatic hydrocarbons (PAHs), some of which are found in cigarette smoke. The CYP1A2 gene encodes a P450 enzyme involved in O-deethylation of phenacetin. Ikeya et al. (1989) found that the human CYP1A2 gene spans almost 7.8 kb and contains 7 exons. The CYP1A2 gene is mapped on 15q24.1. CYP1A2 accounts for nearly 15% of the cytochrome P450 in the human liver. CYP1A2 displays higher activity in men than in women, and is inhibited by oral contraceptives. Inducers of CYP1A2 include cruciferous vegetables. Cigarette smoking has also been shown to increase CYP1A2 activity. Expression of CYP1A2 appears to be induced by various dietary constituents.

## Application Notes

Optimal dilution of the CYP1A2 antibody should be determined by the researcher.

## Immunogen

Amino acids 185-320 of human CYP1A2 were used as the immunogen for the CYP1A2 antibody.

## Storage

After reconstitution, the CYP1A2 antibody can be stored for up to one month at 4°C. For long-term, aliquot and store at -20°C. Avoid repeated freezing and thawing.