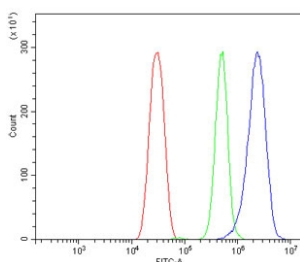


Cyp1a2 Antibody / Cytochrome P450 1A2 (RQ6124)

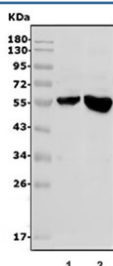
Catalog No.	Formulation	Size
RQ6124	0.5mg/ml if reconstituted with 0.2ml sterile DI water	100 ug

Bulk quote request

Availability	1-3 business days
Species Reactivity	Mouse, Rat
Format	Antigen affinity purified
Clonality	Polyclonal (rabbit origin)
Isotype	Rabbit IgG
Purity	Affinity purified
Buffer	Lyophilized from 1X PBS with 2% Trehalose and 0.025% sodium azide
UniProt	P00186
Applications	Western Blot : 1-2ug/ml Flow Cytometry : 1-3ug/million cells Direct ELISA : 0.1-0.5ug/ml
Limitations	This Cyp1a2 antibody is available for research use only.



Flow cytometry testing of mouse HEPA1-6 cells with Cyp1a2 antibody at 1ug/million cells (blocked with goat sera); Red=cells alone, Green=isotype control, Blue= Cyp1a2 antibody.



Western blot testing of 1) rat liver and 2) mouse liver lysate with Cyp1a2 antibody. Predicted molecular weight ~58 kDa.

Description

CYP1A2 (Cytochrome P450, Subfamily I, Polypeptide 2) is a member of the cytochrome P450 mixed-function oxidase system and is involved in the metabolism of xenobiotics in the body. CYP1A2 is a member of the cytochrome P450 superfamily of enzymes. In humans, the CYP1A2 enzyme is encoded by the CYP1A2 gene. CYP1A2 localizes to the endoplasmic reticulum and its expression is induced by some polycyclic aromatic hydrocarbons (PAHs), some of which are found in cigarette smoke. The CYP1A2 gene encodes a P450 enzyme involved in O-deethylation of phenacetin. Ikeya et al. (1989) found that the human CYP1A2 gene spans almost 7.8 kb and contains 7 exons. The CYP1A2 gene is mapped on 15q24.1. CYP1A2 accounts for nearly 15% of the cytochrome P450 in the human liver. CYP1A2 displays higher activity in men than in women, and is inhibited by oral contraceptives. Inducers of CYP1A2 include cruciferous vegetables. Cigarette smoking has also been shown to increase CYP1A2 activity. Expression of CYP1A2 appears to be induced by various dietary constituents.

Application Notes

Optimal dilution of the Cyp1a2 antibody should be determined by the researcher.

Immunogen

A mouse recombinant partial protein (amino acids H184-K513) was used as the immunogen for the Cyp1a2 antibody.

Storage

After reconstitution, the Cyp1a2 antibody can be stored for up to one month at 4°C. For long-term, aliquot and store at -20°C. Avoid repeated freezing and thawing.