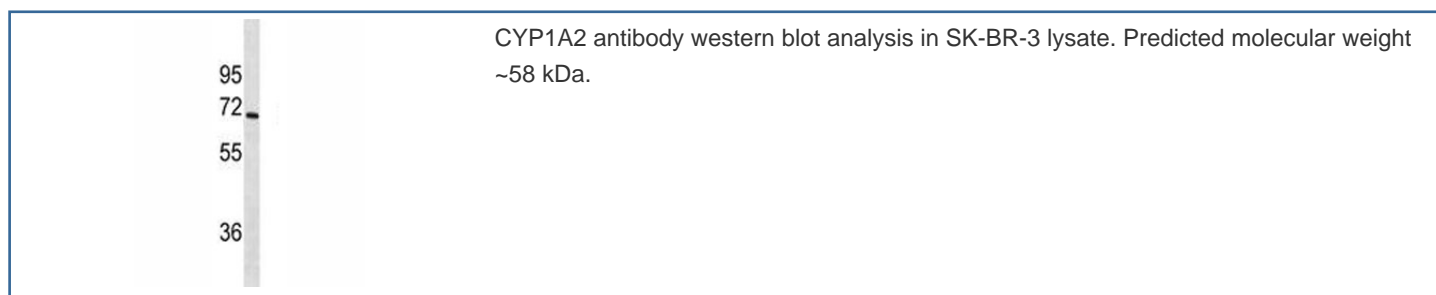


CYP1A2 Antibody [clone 499CT13.2.2] (F40373)

Catalog No.	Formulation	Size
F40373-0.4ML	In 1X PBS, pH 7.4, with 0.09% sodium azide	0.4 ml
F40373-0.08ML	In 1X PBS, pH 7.4, with 0.09% sodium azide	0.08 ml

[Bulk quote request](#)

Availability	1-3 business days
Species Reactivity	Human
Format	Purified
Clonality	Monoclonal (mouse origin)
Isotype	Mouse IgG3
Clone Name	499CT13.2.2
Purity	Purified
UniProt	P05177
Localization	Cytoplasmic, membrane
Applications	Western Blot : 1:100-1:250
Limitations	This CYP1A2 antibody is available for research use only.



Description

This gene encodes a member of the cytochrome P450 superfamily of enzymes. The cytochrome P450 proteins are monooxygenases which catalyze many reactions involved in drug metabolism and synthesis of cholesterol, steroids and other lipids. The protein encoded by this gene localizes to the endoplasmic reticulum and its expression is induced by some polycyclic aromatic hydrocarbons (PAHs), some of which are found in cigarette smoke. The enzyme's endogenous substrate is unknown; however, it is able to metabolize some PAHs to carcinogenic intermediates. Other xenobiotic

substrates for this enzyme include caffeine, aflatoxin B1, and acetaminophen. The transcript from this gene contains four Alu sequences flanked by direct repeats in the 3' untranslated region.

Application Notes

Titration of the CYP1A2 antibody may be required due to differences in protocols and secondary/substrate sensitivity.

Immunogen

A portion of amino acids 255-282 from the human protein was used as the immunogen for this CYP1A2 antibody.

Storage

Aliquot the CYP1A2 antibody and store frozen at -20oC or colder. Avoid repeated freeze-thaw cycles.