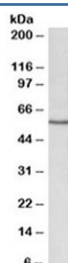


## Cyp1a1 Antibody (R35226)

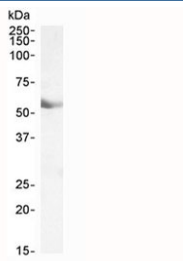
Catalog No.	Formulation	Size
R35226-100UG	0.5 mg/ml in 1X TBS, pH7.3, with 0.5% BSA (US sourced) and 0.02% sodium azide	100 ug

[Bulk quote request](#)

Availability	1-3 business days
Species Reactivity	Human, Rat
Predicted Reactivity	Mouse
Format	Antigen affinity purified
Host	Goat
Clonality	Polyclonal (goat origin)
Isotype	Goat Ig
Purity	Antigen affinity
Gene ID	13076
Localization	Cytoplasmic, membrane
Applications	Western Blot : 0.1-0.3ug/ml ELISA (peptide) LOD : 1:64000
Limitations	This Cyp1a1 antibody is available for research use only.



Western blot testing of rat lung lysate with Cyp1a1 antibody at 0.1ug/ml. Predicted molecular weight ~58 kDa.



Western blot testing of human lung lysate with Cyp1a1 antibody at 0.1ug/ml. Predicted molecular weight ~58 kDa.

## Description

Additional name(s) for this target protein: Cytochrome P450 1A1

## Application Notes

Optimal dilution of the Cyp1a1 antibody should be determined by the researcher.

1. This Cyp1a1 antibody will not cross react with Cyp1a2

## Immunogen

Amino acids QDRKLDENANVQLSD were used as the immunogen for this Cyp1a1 antibody.

## Storage

Aliquot and store the Cyp1a1 antibody at -20oC.