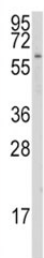


CYP1A1 Antibody (F50939)

Catalog No.	Formulation	Size
F50939-0.2ML	In 1X PBS, pH 7.4, with 0.09% sodium azide	0.2 ml
F50939-0.05ML	In 1X PBS, pH 7.4, with 0.09% sodium azide	0.05 ml

[Bulk quote request](#)

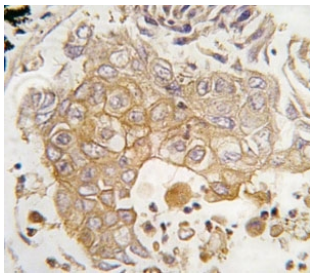
Availability	1-3 business days
Species Reactivity	Human, Mouse
Predicted Reactivity	Primate
Format	Purified
Clonality	Polyclonal (rabbit origin)
Isotype	Rabbit Ig
Purity	Purified
UniProt	P04798
Localization	Cytoplasmic, membrane
Applications	Western Blot : 1:1000 IHC (Paraffin) : 1:10-1:50
Limitations	This CYP1A1 antibody is available for research use only.



Western blot analysis of CYP1A1 antibody and K562 lysate. Predicted molecular weight ~58 kDa.



Western blot analysis of CYP1A1 antibody and mouse lung tissue lysate



IHC analysis of FFPE human lung carcinoma tissue stained with CYP1A1 antibody

Description

Cytochromes P450 are a group of heme-thiolate monooxygenases. In liver microsomes, CYP1A1 is involved in an NADPH-dependent electron transport pathway. It oxidizes a variety of structurally unrelated compounds, including steroids, fatty acids, and xenobiotics. [UniProt]

Application Notes

Titration of the CYP1A1 antibody may be required due to differences in protocols and secondary/substrate sensitivity.

Immunogen

A portion of amino acids 377-405 from the human protein was used as the immunogen for this CYP1A1 antibody.

Storage

Aliquot the CYP1A1 antibody and store frozen at -20oC or colder. Avoid repeated freeze-thaw cycles.