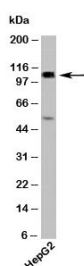


## CYLD Antibody (N1164)

Catalog No.	Formulation	Size
N1164-100UG	0.5 mg/ml in 1X PBS with 0.1 mg/ml BSA (US sourced), 0.05% sodium azide	100 ug
N1164-25UG	0.5 mg/ml in 1X PBS with 0.1 mg/ml BSA (US sourced), 0.05% sodium azide	25 ug

[Bulk quote request](#)

Species Reactivity	Human, Mouse
Format	Purified
Host	Rabbit
Clonality	Polyclonal (rabbit origin)
Isotype	Rabbit IgG
Purity	Protein A affinity chromatography
Buffer	1X PBS, pH 7.4
Gene ID	1540
Applications	Western Blot : 2-5ug/ml
Limitations	This <b>CYLD antibody</b> is available for research use only.



Western blot testing of human samples with CYLD antibody at 2ug/ml. Predicted molecular weight ~107kDa.

## Description

CYLD is involved in multiple physiological processes including immune response, osteoclastogenesis and spermatogenesis. It is a tumor suppressor via its negative regulation of NF- $\kappa$ B activation. CYLD is a deubiquitinase, removing ubiquitin chains from tumor-necrosis factor receptor-associated factor 2 (TRAF2) and thereby preventing its activation of I $\kappa$ B, a regulator of NF- $\kappa$ B. NF- $\kappa$ B remains sequestered in the cytoplasm, unable to translocate to the nucleus and initiate cell survival and oncogenetic signaling.

## Application Notes

Provided assay concentrations are suggestions only, CYLD antibody titration may be required for optimal results.

## **Immunogen**

A recombinant protein fragment from the N-termiinal region of human CYLD was used as the immunogen for this antibody.

## **Storage**

Aliquot the CYLD antibody and store frozen at -20oC or colder. Avoid repeated freeze-thaw cycles.

## **Alternate Names**

Cylindromatosis, BRSS, CDMT antibody