

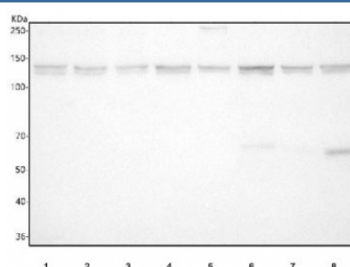
CYFIP1 Antibody / Cytoplasmic FMR1-interacting protein 1 [clone 29C25] (RQ8784)

| Catalog No. | Formulation | Size |
|-------------|--|--------|
| RQ8784 | Antibody in PBS with 0.02% sodium azide, 50% glycerol and 0.4-0.5mg/ml BSA | 100 ul |

Recombinant **RABBIT MONOCLONAL**

[Bulk quote request](#)

| | |
|--------------------|--|
| Availability | 1-3 days |
| Species Reactivity | Human, Mouse, Rat |
| Format | Purified |
| Clonality | Recombinant Rabbit Monoclonal |
| Isotype | Rabbit IgG |
| Clone Name | 29C25 |
| Purity | Affinity chromatography |
| UniProt | Q7L576 |
| Applications | Western Blot : 1:500-1:2000 |
| Limitations | This CYFIP1 antibody is available for research use only. |



Western blot testing of 1) human HeLa, 2) human SH-SY5Y, 3) human U-2 OS, 4) rat brain, 5) rat C6, 7) mouse brain and 8) mouse Neuro-2a cell lysate with CYFIP1 antibody. Predicted molecular weight ~145 kDa but multiple smaller isoforms.

Application Notes

Optimal dilution of the CYFIP1 antibody should be determined by the researcher.

Immunogen

A synthetic peptide specific to human CYFIP1 protein was used as the immunogen for the CYFIP1 Antibody.

Storage

Store the CYFIP1 antibody at -20oC.