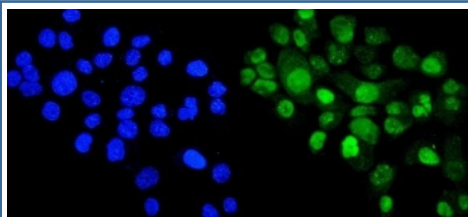


## Cyclophilin E Antibody (RQ6110)

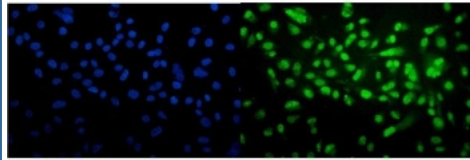
Catalog No.	Formulation	Size
RQ6110	0.5mg/ml if reconstituted with 0.2ml sterile DI water	100 ug

### Bulk quote request

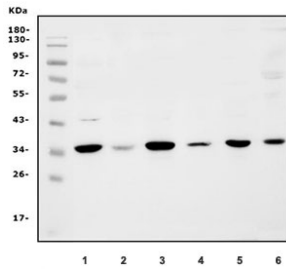
<b>Availability</b>	1-3 business days
<b>Species Reactivity</b>	Human, Mouse
<b>Format</b>	Antigen affinity purified
<b>Host</b>	Rabbit
<b>Clonality</b>	Polyclonal (rabbit origin)
<b>Isotype</b>	Rabbit IgG
<b>Purity</b>	Affinity purified
<b>Buffer</b>	Lyophilized from 1X PBS with 2% Trehalose and 0.025% sodium azide
<b>UniProt</b>	Q9UNP9
<b>Localization</b>	Nuclear
<b>Applications</b>	Western Blot : 1-2ug/ml Immunofluorescence : 5ug/ml Flow Cytometry : 1-3ug/million cells Direct ELISA : 0.1-0.5ug/ml Immunoprecipitation : 2ug per 500ug of lysate
<b>Limitations</b>	This Cyclophilin E antibody is available for research use only.



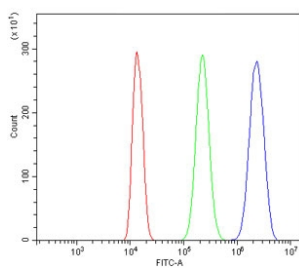
Immunofluorescent staining of FFPE human A431 cells with Cyclophilin E antibody (green) and DAPI nuclear stain (blue). HIER: steam section in pH6 citrate buffer for 20 min.



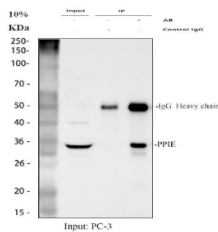
Immunofluorescent staining of FFPE human PC-3 cells with Cyclophilin E antibody (green) and DAPI nuclear stain (blue). HIER: steam section in pH6 citrate buffer for 20 min.



Western blot testing of human 1) HEK293, 2) HeLa, 3) K562, 4) PC-3, 5) Caco-2 and 6) mouse HEPA1-6 lysate with Cyclophilin E antibody. Predicted molecular weight ~33 kDa.



Flow cytometry testing of human ThP-1 cells with Cyclophilin E antibody at 1ug/million cells (blocked with goat sera); Red=cells alone, Green=isotype control, Blue= Cyclophilin E antibody.



Immunoprecipitation of Cyclophilin E protein from 500ug of human PC-3 whole cell lysate with 2ug of Cyclophilin E antibody.

## Description

Peptidylprolyl isomerase E (cyclophilin E), also known as PPIE, is an enzyme which in humans is encoded by the PPIE gene on chromosome 1. The protein encoded by this gene is a member of the peptidyl-prolyl cis-trans isomerase (PPIase) family. PPIases catalyze the cis-trans isomerization of proline imidic peptide bonds in oligopeptides and accelerate the folding of proteins. This protein contains a highly conserved cyclophilin (CYP) domain as well as an RNA-binding domain. It was shown to possess PPIase and protein folding activities, and it also exhibits RNA-binding activity. Alternative splicing results in multiple transcript variants. A related pseudogene, which is also located on chromosome 1, has been identified.

## Application Notes

Optimal dilution of the Cyclophilin E antibody should be determined by the researcher.

## Immunogen

A human recombinant partial protein (amino acids M1-V301) was used as the immunogen for the Cyclophilin E antibody.

## Storage

After reconstitution, the Cyclophilin E antibody can be stored for up to one month at 4oC. For long-term, aliquot and store at -20oC. Avoid repeated freezing and thawing.

