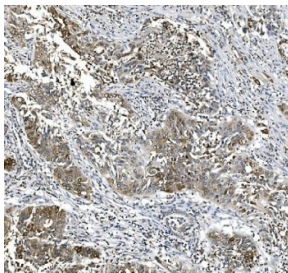


Cyclooxygenase 2 Antibody / COX-2 / PTGS2 (RQ8793)

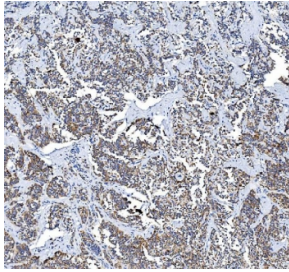
Catalog No.	Formulation	Size
RQ8793	0.5mg/ml if reconstituted with 0.2ml sterile DI water	100 ug

[Bulk quote request](#)

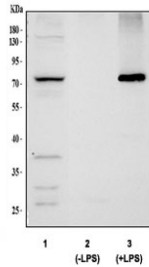
Availability	1-3 days
Species Reactivity	Human, Mouse
Format	Antigen affinity purified
Host	Rabbit
Clonality	Polyclonal (rabbit origin)
Isotype	Rabbit IgG
Purity	Antigen affinity chromatography
Buffer	Lyophilized from 1X PBS with 2% Trehalose and 0.05% sodium azide
UniProt	P35354
Localization	Cytoplasm, Cell surface
Applications	Western Blot : 1-2ug/ml Immunohistochemistry (FFPE) : 2-5ug/ml Flow Cytometry : 1-3ug/million cells ELISA : 0.1-0.5ug/ml
Limitations	This Cyclooxygenase 2 antibody is available for research use only.



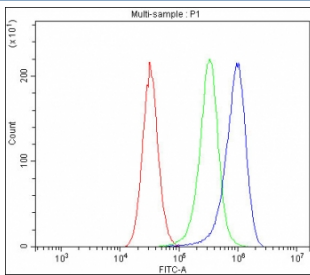
IHC staining of FFPE human lung cancer tissue with Cyclooxygenase 2 antibody. HIER: boil tissue sections in pH8 EDTA for 20 min and allow to cool before testing.



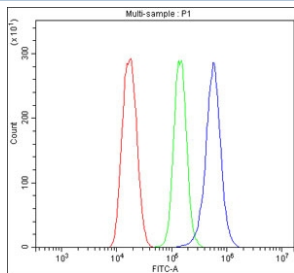
IHC staining of FFPE human pancreatic cancer tissue with Cyclooxygenase 2 antibody. HIER: boil tissue sections in pH8 EDTA for 20 min and allow to cool before testing.



Western blot testing of 1) human HeLa, 2) lysate from mouse RAW264.7 cells that were not treated with LPS and 3) lysate from mouse RAW264.7 cells that were treated with LPS, with Cyclooxygenase 2 antibody. Predicted molecular weight ~69 kDa.



Flow cytometry testing of fixed and permeabilized human Caco-2 cells with Cyclooxygenase 2 antibody at 1ug/million cells (blocked with goat sera); Red=cells alone, Green=isotype control, Blue= Cyclooxygenase 2 antibody.



Flow cytometry testing of fixed and permeabilized mouse HEPA1-6 cells with Cyclooxygenase 2 antibody at 1ug/million cells (blocked with goat sera); Red=cells alone, Green=isotype control, Blue= Cyclooxygenase 2 antibody.

Description

Dual cyclooxygenase and peroxidase in the biosynthesis pathway of prostanoids, a class of C20 oxylipins mainly derived from arachidonate ((5Z,8Z,11Z,14Z)-eicosatetraenoate, AA, C20:4(n-6)), with a particular role in the inflammatory response. [UniProt]

Application Notes

Optimal dilution of the Cyclooxygenase 2 antibody should be determined by the researcher.

Immunogen

An E.coli-derived human recombinant protein (amino acids A18-L604) was used as the immunogen for the Cyclooxygenase 2 antibody.

Storage

After reconstitution, the Cyclooxygenase 2 Antibody can be stored for up to one month at 4oC. For long-term, aliquot and store at -20oC. Avoid repeated freezing and thawing.

