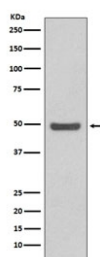


## Cyclin E2 Antibody [clone GHH-3] (RQ4830)

Catalog No.	Formulation	Size
RQ4830	Antibody in PBS with 0.02% sodium azide, 50% glycerol and 0.4-0.5mg/ml BSA	100 ul

[Bulk quote request](#)

Availability	1-2 weeks
Species Reactivity	Human
Format	Purified
Clonality	Rabbit Monoclonal
Isotype	Rabbit IgG
Clone Name	GHH-3
Purity	Affinity purified
UniProt	O96020
Applications	Western Blot : 1:500-1:1000
Limitations	This Cyclin E2 antibody is available for research use only.



Western blot testing of human HeLa cell lysate with Cyclin E2 antibody. Expected molecular weight: 45-50 kDa.

### Description

'G1/S-specific cyclin-E2' belongs to the highly conserved cyclin family, whose members are characterized by a dramatic periodicity in protein abundance through the cell cycle. Cyclins function as regulators of CDK kinases. Different cyclins exhibit distinct expression and degradation patterns which contribute to the temporal coordination of each mitotic event. This cyclin forms a complex with and functions as a regulatory subunit of CDK2. This cyclin has been shown to specifically interact with CIP/KIP family of CDK inhibitors, and plays a role in cell cycle G1/S transition. The expression of this gene peaks at the G1-S phase and exhibits a pattern of tissue specificity distinct from that of cyclin E1. A significantly increased expression level of this gene was observed in tumor-derived cells. [RefSeq]

## **Application Notes**

Optimal dilution of the Cyclin E2 antibody should be determined by the researcher.

## **Immunogen**

A synthetic peptide specific to human Cyclin E2 / CCNE2 was used as the immunogen for the Cyclin E2 antibody.

## **Storage**

Store the Cyclin E2 antibody at -20oC.