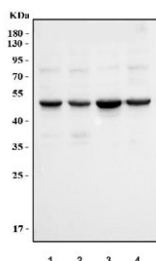


## Cyclin E1 Antibody / CCNE1 [clone 8B9C3] (RQ7120)

Catalog No.	Formulation	Size
RQ7120	0.5mg/ml if reconstituted with 0.2ml sterile DI water	100 ug

**Bulk quote request**

<b>Availability</b>	1-3 business days
<b>Species Reactivity</b>	Human
<b>Format</b>	Antigen affinity purified
<b>Host</b>	Mouse
<b>Clonality</b>	Monoclonal (mouse origin)
<b>Isotype</b>	Mouse IgG2b
<b>Clone Name</b>	8B9C3
<b>Purity</b>	Antigen affinity purified
<b>Buffer</b>	Lyophilized from 1X PBS with 2% Trehalose
<b>UniProt</b>	P24864
<b>Applications</b>	Western Blot : 0.5-1ug/ml
<b>Limitations</b>	This Cyclin E1 antibody is available for research use only.



Western blot testing of human 1) HeLa, 2) K562, 3) A549 and 4) Caco-2 cell lysate with Cyclin E1 antibody. Predicted molecular weight ~47 kDa.

## Description

G1/S-specific cyclin-E1 is a protein that in humans is encoded by the CCNE1 gene. It is mapped to 19q12. The protein encoded by this gene belongs to the highly conserved cyclin family, whose members are characterized by a dramatic periodicity in protein abundance through the cell cycle. Cyclins function as regulators of CDK kinases. Different cyclins exhibit distinct expression and degradation patterns which contribute to the temporal coordination of each mitotic event. This cyclin forms a complex with and functions as a regulatory subunit of CDK2, whose activity is required for cell cycle

G1/S transition. This protein accumulates at the G1-S phase boundary and is degraded as cells progress through S phase. Overexpression of this gene has been observed in many tumors, which results in chromosome instability, and thus may contribute to tumorigenesis. This protein was found to associate with, and be involved in, the phosphorylation of NPAT protein (nuclear protein mapped to the ATM locus), which participates in cell-cycle regulated histone gene expression and plays a critical role in promoting cell-cycle progression in the absence of pRB.

## Application Notes

Optimal dilution of the Cyclin E1 antibody should be determined by the researcher.

## Immunogen

Recombinant human protein (amino acids R3-A386) was used as the immunogen for the Cyclin E1 antibody.

## Storage

After reconstitution, the Cyclin E1 antibody can be stored for up to one month at 4°C. For long-term, aliquot and store at -20°C. Avoid repeated freezing and thawing.